

LET ME GO

Words and Music by BRAD ARNOLD,
ROBERT HARRELL, CHRISTOPHER HENDERSON
and MATTHEW ROBERTS

Moderate Rock

C#m7 B5 A B5

C#m7 B5 F#5 A5#4

C#m7 B5 A B5

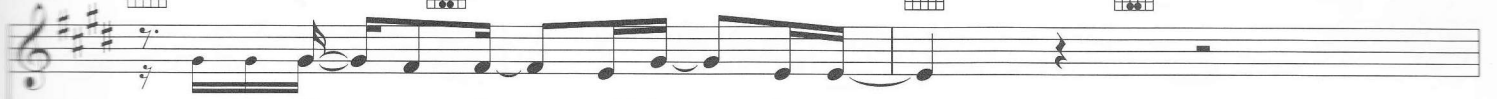
One _ more kiss _ could be _ the best _ thing.
I dream a - head _ to what _ I hope _ for.

C#m7

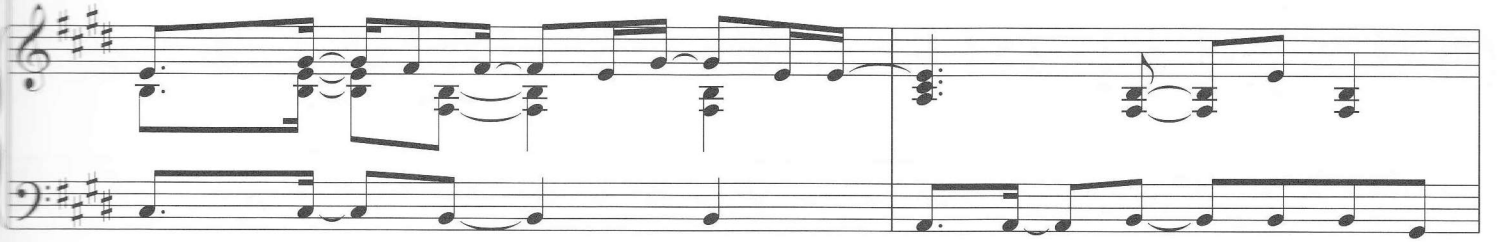
B5

A

B5



One more lie could be the worst.
And I turn my back on loving you.



C#m7

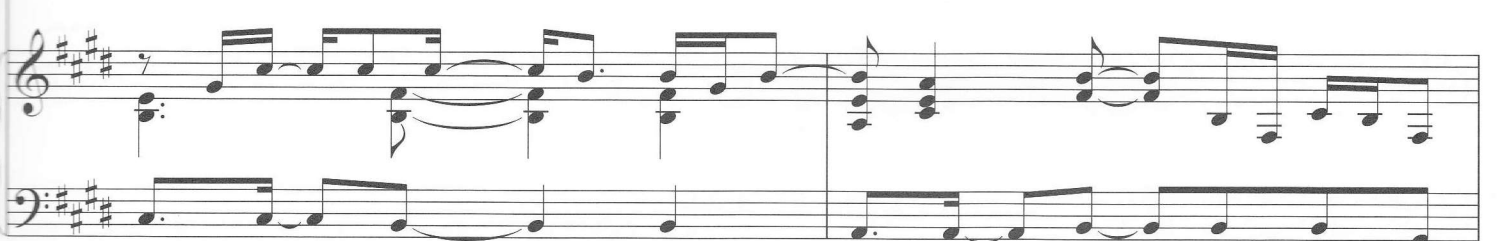
B5

A

B5



And all these thoughts are never resting.
How can this love be a good thing?



C#m7

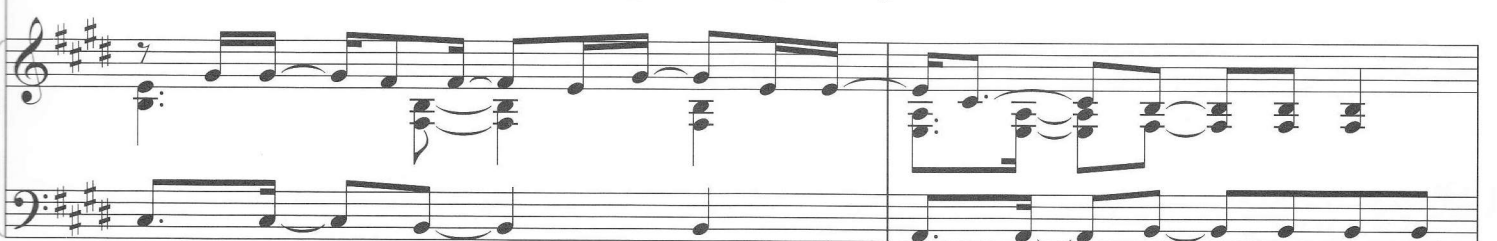
B5

A

B5



And you're not something I deserve.
And I know what I'm going through.



C#5

B5

G#5

A5



In my head there's only you now.



E5 F#5 A5 C#5 B5

This world _ falls _ on _ me. In this _ world _ there's real _

G#5 A5 E5 F#5 A5

_ and make be - lieve. This seems _ real _ to _ me.

E5 B5 C#5 A5

You love _ me but you don't _ know _ who _ I am. _

C#5 B5 C#5 A5

I'm torn be - tween _ this life _ I _ lead and _ where _ I stand.

E5 B5 C#5 A5

You love me but you don't know who I am.

Detailed description: This system contains the first two lines of music. The top line is a vocal melody in treble clef with lyrics. Above it are four guitar chord diagrams: E5, B5, C#5 (4fr), and A5 (5fr). The bottom two lines are piano accompaniment in treble and bass clefs.

C#5 B5 1 G#5 A5 C#m7 B5

To Coda

So let me go. Let me go.

Detailed description: This system contains the third and fourth lines of music. The top line is a vocal melody with lyrics. Above it are six guitar chord diagrams: C#5 (4fr), B5, G#5 (4fr), A5 (5fr), C#m7 (4fr), and B5. A 'To Coda' symbol is placed between the second and third chords. The bottom two lines are piano accompaniment.

A B5 C#m7 B5

Detailed description: This system contains the fifth and sixth lines of music. The top line is a vocal melody. Above it are four guitar chord diagrams: A, B5, C#m7 (4fr), and B5. The bottom two lines are piano accompaniment.

F#5 A5#4 2 G#5 A5

Just let me go.

Detailed description: This system contains the seventh and eighth lines of music. The top line is a vocal melody with lyrics. Above it are five guitar chord diagrams: F#5, A5#4, G#5 (4fr), A5 (5fr), and A5. A '2' above the G#5 chord indicates a second ending. The bottom two lines are piano accompaniment.

Let me go.

And no mat - ter how hard I try I

can't es - cape these things in - side. I know. I

know. When all the piec - es fall a - part you will be the on - ly one who



D.S. al Coda

knows, — who — knows. — You love — me but you

CODA



Just let — me go. You love — me but you



don't. You love — me but you don't. — You love — me but you

1	2

don't — know — who — I am. don't — know — me. —