





# Can You Feel the Love Tonight

from Walt Disney Pictures' *The Lion King*

Music by Elton John • Lyrics by Tim Rice

Moderately

G D/F# C/E G/D

3 5 4 2 1

*mp*

5 5 5 1 5

C G Am/C D7

2 2 1

1 5

C G C

1 1 1

There's a calm sur - ren - der to the rush of  
 There's a time for ev - 'ry-one, if they on - ly

2

G C G

day, when the heat of the roll - ing world  
 learn that the twist - ing ka - lei - do - scope





Em C G 1 2

to - night? It is

2

C A D C 2

where we are. It's e -

1 2 3 5 1 5

G Em C Am G

nough for this wide - eyed wan - der - er that we

1 5 3 5 1 5 2 3

C A D

got this far. And

1 2 1 2 3 5





G D Em

can you feel the love to - night,

3 5 5 5 2



C G 1 2 C 5 A

how it's laid to

8 8

D C

rest? It's e -

1 2 3 5 1 5

G Em 3 C 2 1

nough to make kings and vag - a - bonds be -

5 3 1 2 1

8 8





Am G C D7sus 1. C

lieve the ver - y best.

1 5 1 5

(D.C.) 2. C G C

best. It's e -

G Em C

nough to make kings and vag - a - bonds be -

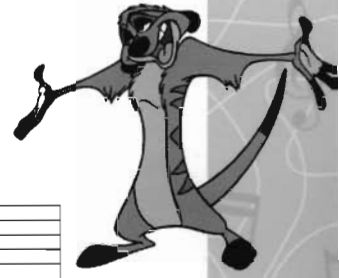
*Gradually slower*

8

Am G C D7sus C/E G

lieve the ver - y best.

*Very slowly*







# Kiss the Girl

from Walt Disney's *The Little Mermaid*

Lyrics by Howard Ashman • Music by Alan Menken

Moderately

*mf*

C  
3  
1

F  
4 2

1 2 4 C 3



G7 C

don't know why but you're dy - ing to try. You wan-na kiss the girl.

1

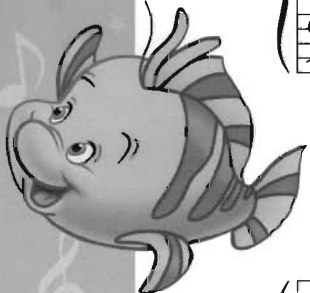
Yes, you want her.

F

Look at her, you know you do. Pos - si - ble she wants you,

C

too. There is one way to ask her. It don't



G7 C

1 3 4

take a word, not a sin - gle word, go on and kiss the girl.

F

2

Sha la la la la la my oh my. Look like the

C G7 C

2 1

boy too shy. Ain't gon - na kiss the girl. Sha la la la la la

F G7

3 1 2 1 3

ain't that sad. Ain't it a shame too bad. He gon - na





C

miss the girl.

2

4 1

5 1

F

4 1

2

C

5

1

2

5

G7

C

5 1

3

5 1

2





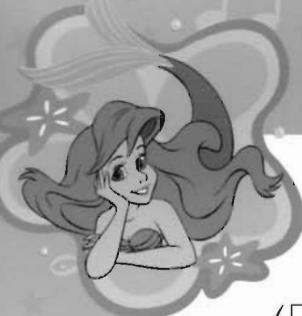
Musical notation for the first system, including treble and bass clefs and fingerings (5, 1).

Musical notation for the second system with lyrics: "Now's your moment, float-ing in a blue la -".

Musical notation for the third system with lyrics: "goon. Boy, you bet - ter do it". Includes a chord marking 'F' and fingerings (4, 2).

Musical notation for the fourth system with lyrics: "soon, no time will be bet - ter. She don't". Includes a chord marking 'C' and fingerings (1, 2, 4, 3).





G7  
4  
2

3

say a word and she won't say a word un - til you

5 1

C

4 2 4 5 1 2

kiss the girl.

Sha la la la la la,  
Sha la la la la la,

2 5 2 1 2

F G7

don't be scared. You got the mood pre - pared, go on and  
float a - long. And lis - ten to the song, the song say

1 3 1

C

kiss the girl.  
kiss the girl.

Sha la la la la la,  
Sha la la la la the

3 1 3



F G7 1 3 1. C 2

don't stop now. Don't try to hide it how you wan-na kiss the girl.  
 mu - sic play. Do what the mu - sic say. You got - ta

1 3 1 2 3 5

2. C

kiss the girl. You've got to kiss the girl.

2

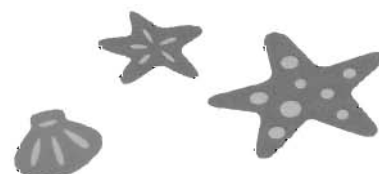
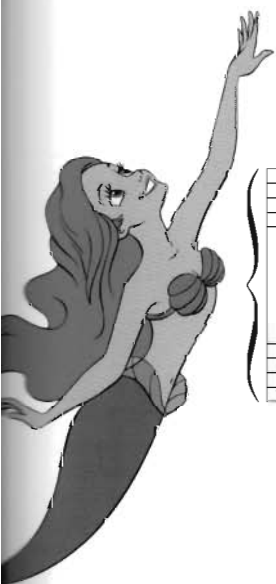
2 1 5 4

You wan-na kiss the girl. You've got-ta kiss the girl.

5 4 5 4 5

Go on and kiss the girl.

2 1 5



# Part of Your World

from Walt Disney's *The Little Mermaid*

Lyrics by Howard Ashman • Music by Alan Menken

Moderately

B $\flat$  C/B $\flat$

Look at this stuff. \_\_\_  
Look at this trove, \_\_\_

Is - n't it neat? \_\_\_  
treas - ures un - told. \_\_\_

*mf*

B $\flat$  C/B $\flat$

Would - n't you think \_\_\_ my col - lec - tion's com - plete?  
How man - y won - ders can one cav - ern hold?

A $m$ 7 D $m$ 7 F/G

Would - n't you think \_ I'm the girl, \_\_\_ the girl who has ev - 'ry - thing. \_  
Look - ing a - round \_ here you'd think \_\_\_ sure, she's got ev - 'ry - thing. \_

1. G7 2. G7 B $\flat$ maj7

I've got gad - gets and giz - mos a -





Am7 F/A Dm7 3 3 F/G G7

plen - ty. I've got who - zits and what - zits ga - lore. You want

Bbmaj7 3 Am7 Dm7

thing - a - ma - bobs, I've got twen - ty. But who cares? No big

F/G G7 Csus C Bb/C C

deal. I want more.

F Am7 Bb

I wan - na be \_\_\_ where the peo - ple are. I wan - na see \_\_\_ wan - na  
Flip - pin' your fins \_\_\_ you don't get too far. Legs are re - quired \_\_\_ for







Bb/C C Dm Am

see 'em danc - in', walk - in' a - round — on those, what d - ya call — 'em, oh  
jump - in', danc - in', stroll - in' a - long — down the, what's the word a - gain,

1. C7 F 2. C7

feet. street.

F F/Eb

Up where they walk, up where they run, up where they

Bb/D Bbm/Db F/C

stay all day — in the sun. Wan - der - in' free, wish I could



Fsus C7 F

be part of that world. What would I

Bb C/Bb Am

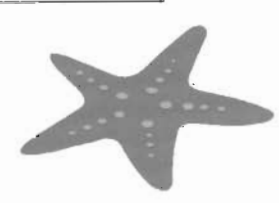
give if I could live out - ta these wa - ters.

Dm Bb C/Bb

What would I pay to spend a day warm on the

Am F7sus F7/Eb Bb

sand. Bet - cha on land they un - der -



C/Bb A7sus A7 Dm Dm/C

stand. Bet they don't re - pri - mand — their daugh - ters. Bright young

F/G G F/G G Ebmaj7

wom - en, sick of swim - min' read - y to stand.

Bb/C F Am7

— And read - y to know — what the peo - ple know. —

Bb C7 Dm

Ask 'em my ques - tions and get some an - swers. What's a fire, — and



Am F/A Gm C7

why does it, what's the word, burn. When's \_ it my

F F/Eb Bb/D Bbm/Db

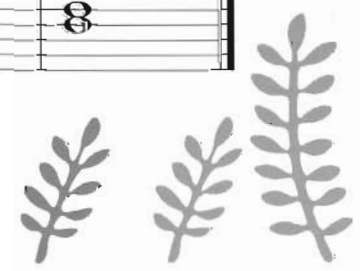
turn? Would-n't I love, love to ex - plore that shore up a - bove, \_\_\_\_\_

F Fsus

Out of the sea. Wish I could be

C7 Bb Bb/C F

part of that world. \_\_\_\_\_





# Mary Poppins

## Chim Chim Cher-ee

from Walt Disney's *Mary Poppins*

Words and Music by Richard M. Sherman and Robert B. Sherman

Lightly, with gusto

Dm C#dim7 Dm C#dim7

*mf*

Dm F+ Dm7

Chim chim - in - ey, chim chim - in - ey, chim chim cher -  
Up where the smoke is all bil - lered and  
Chim chim - in - ey, chim chim - in - ey, chim chim cher -

G Gm Dm E7 2 3

ee! A sweep is as luck - y as luck - y can  
curled 'tween pave - ment and stars is the chim - ney sweep  
ee! When you're with a sweep you're in glad com - pa -



A Dm F+

be. world. When there's ny.

Chim chim - in - ey, 'ard - ly no No - where is

chim chim - in - ey, day nor there a more

Dm7 G Gm

chim chim cher - oo! Good luck will rub  
'ard - ly no night, there's things 'alf in  
'ap - pi - er crew than them wot sings

1

Dm A7 Dm

off shad - ow and "chim chim

when I and cher

I shake 'alf - way ee, chim

'ands with you, or  
cher in light on the  
cher - oo!"

Gm Dm A7 Dm Fine

blow me a kiss and that's luck - y too.  
roof - tops of Lon - don; coo, what a sight!  
Chim chim-in - ey chim chim, cher - ee, chim cher - oo!





*Mary Poppins*  
PRACTICALLY  
PERFECT  
IN  
Everyway

Dm F+ Dm7 G

Now as the lad - der of life 'as been strung, you  
I choose me bris - tles with pride, yes, I do: A

Gm Dm E7 A

may think a sweep's on the bot - tom - most rung. Though  
broom for the shaft and a brush for the flue. Though I'm

Dm F+ Dm7 G

I spends me time in the ash - es and smoke, in  
cov - ered with soot from me 'ead to me toes, a

Gm Dm A7 Dm (D.C.)

this 'ole wide world there's no 'ap - pi - er bloke.  
sweep knows 'e's wel - come wher - ev - er 'e goes.





# Supercalifragilisticexpialidocious

from Walt Disney's *Mary Poppins*

Words and Music by Richard M. Sherman and Robert B. Sherman

Brightly

C C#dim G7

Mary Poppins:  
*mf*  
 Su - per - cal - i - frag - il - is - tic - ex - pi - al - i - do - cious!

C

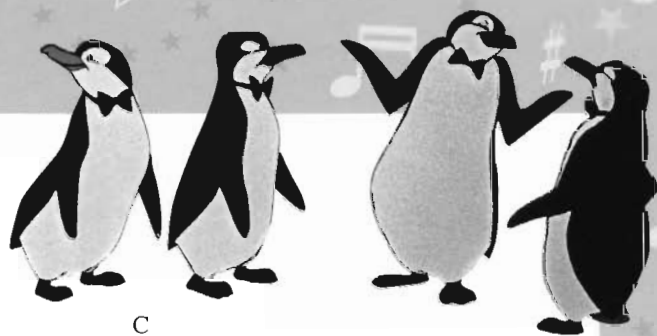
E - ven though the sound of it is some - thing quite a - tro - cious,

C7 F

If you say it loud e - nough, you'll al - ways sound pre - co - cious.

F F#dim C G7 C

Su - per - cal - i - frag - il - is - tic - ex - pi - al - i - do - cious!



*Pearlies:*

Um did - dle did - dle did - dle, um did - dle ay! Um did - dle did - dle did - dle,

Chords: C, G7, C

um did - dle ay! *Bert:* Be - cause I was a - fraid to speak when  
*Mary:* { He trav - elled all a - round the world and  
*Poppins:* { So when the cat has got your tongue, there's

Chords: G7, C

I was just a lad, me fa - ther gave me nose a tweak and  
 ev - 'ry - where he went, he'd use his word and all would say, "There  
 no need to dis - may. Just sum - mon up this word and then you've

Chords: C#dim, G7

told me I was bad. But then one day I  
 goes a clev - er gent!" *Bert:* { When dukes and ma - 'a -  
 got a lot to say. { But bet - ter use it

Chord: C





C

sound of it is some - thing quite a - tro - cious, if you say it  
frag - il - is - tic - ex - pi - al - i - do - cious! Su - per - cal - i -

C7 F F F#dim

loud e - nough, you'll al - ways sound pre - co - cious. Su - per - cal - i -  
frag - il - is - tic - ex - pi - al - i - do - cious! Su - per - cal - i -

C G7 1.,2. 3.  
C C C

frag - il - is - tic - ex - pi - al - i - do - cious!  
frag - il - is - tic - ex - pi - al - i - do - cious!

F F#dim C G7 C V

*f*

