

Chan's Song

Herbie Hancock

Ballad

♩ = 64

A

G^bΔ

D^Δ9/G^b

B^bΔ/F

G⁹SUS

G⁷



C^Δ

E^bSUS

A^bΔ

D^b13SUS

D^b13(b9)



G^bΔ

F¹³

Dmi⁹

B^b9SUS

G⁷(#9)



Cmi⁹

B^bmi⁷

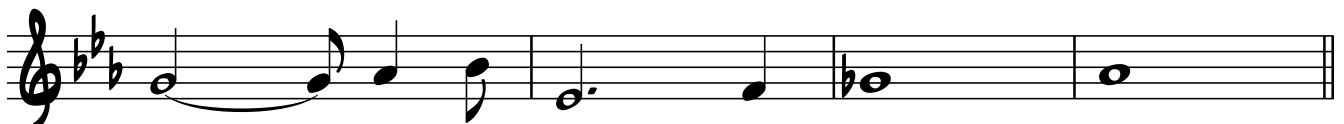
E^b9SUS

A^bΔ

D^b9SUS

E^b9SUS

B^b7(b9)



♩

B

E^bΔ

Cmi⁷

D^b9SUS

E^b9SUS

B^b7(b9)



E^bΔ

G⁷(b9)

Cmi⁹

D^b9SUS

⊕

D^bSUS(b9)

D^b13(b9)



Solos on AB

After Solos D.S. to Coda

⊕

D^b7SUS(b9)

D^b/C^b

C^b/A

A^bmi⁷

C^b/D^b

E^bΔ

