

# HOLD ON MY HEART

By  
 TONY BANKS, PHIL COLLINS  
 and MIKE RUTHERFORD

♩ = 84

$A^{\flat}maj7$   
 $A^{\flat}(b5)$   
 $A^{\flat}maj7$   
 $A^{\flat}(b5)$

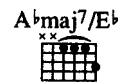
$Gsus4$

$A^{\flat}maj7/E^{\flat}$   
 $E^{\flat}$   
 $A^{\flat}maj7/E^{\flat}$

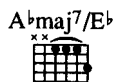
Hold on\_\_ my heart,\_\_\_\_ just hold on\_\_ to that  
 Hold on\_\_ my heart,\_\_\_\_ don't let her\_\_ throw me a  
 Hold on\_\_ my heart,\_\_\_\_ see you



feel - ing. — We both — know we've been here — be - fore, —  
 life - line. — I'll — keep a place — for you, —  
 cry - ing. — No — mat - ter where — I go, —



we both know what — can hap - pen. — Hold on — my heart, —  
 some - where deep — in - side. So hold on — my heart. —  
 she'll al - ways — be with me. — Hold on — my heart, —



— 'cos I'm — look - ing — o - ver your shoul - der. —  
 — please — tell her — to — be pat - ient. —  
 — just — hold on — to — that feel - ing. —



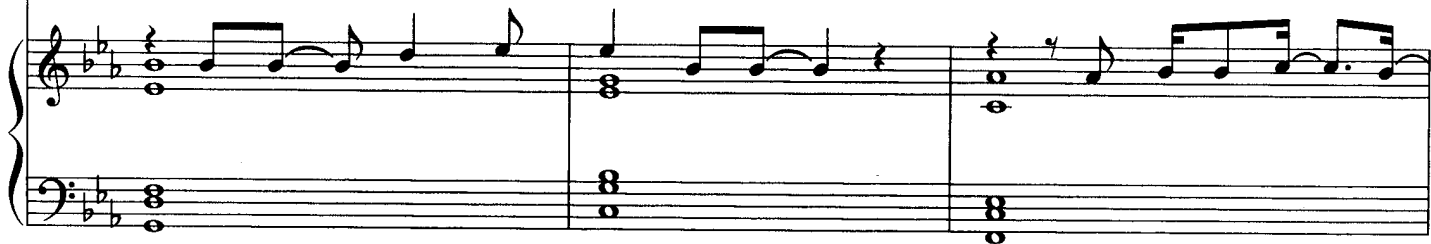
To Coda ⊕

1.

Fm7



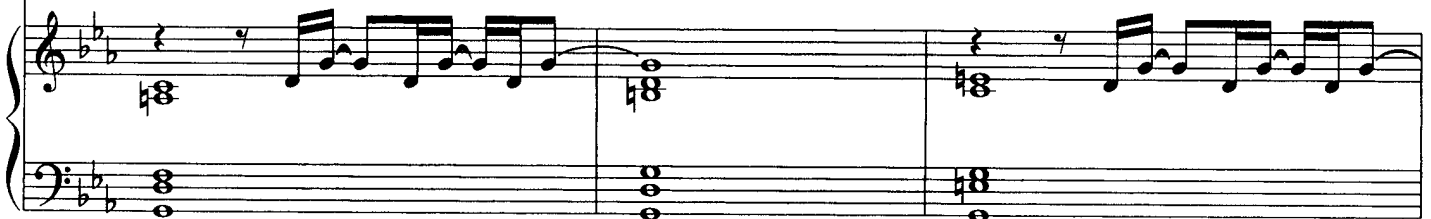
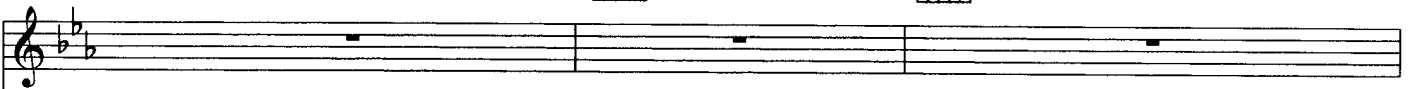
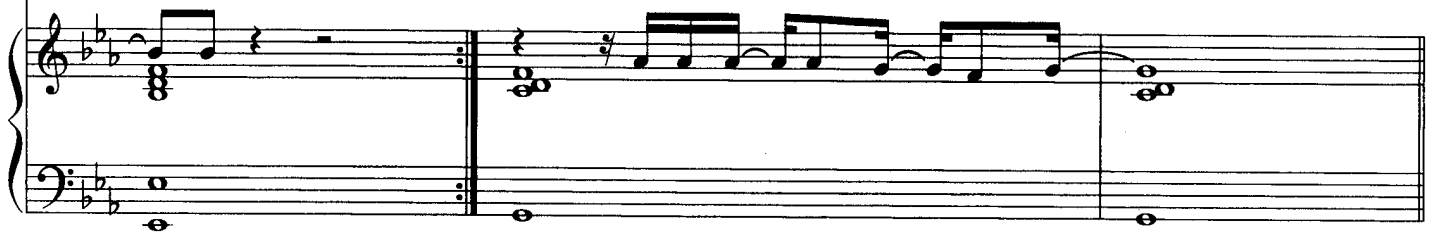
Oh please\_\_\_ don't rush in this time,\_\_\_ don't show her how\_\_\_ you\_\_\_  
'Cos there has ne - ver been a time,  
We both\_\_\_ know we've been here be - fore,



2.



\_\_\_ feel. that I want - ed some - thing more. \_\_\_



G F/G G F/G

If I can re - call this feel - ing, and I know there's a

Detailed description: This system contains the first four measures of the piece. It features a vocal line in treble clef with lyrics, a piano accompaniment in treble and bass clefs, and guitar chord diagrams for G and F/G. The key signature has two flats (Bb and Eb), and the time signature is 4/4. The piano accompaniment includes chords in the right hand and a bass line in the left hand.

G Cm9 F Cm9

chance, oh I will be there, yes I will be there,

Detailed description: This system contains measures 5 through 8. It features a vocal line with lyrics, a piano accompaniment, and guitar chord diagrams for G, Cm9, and F. The piano accompaniment includes triplets in the right hand and a bass line in the left hand.

F G F/G G

be there for you. When - ev - er you want me to,

Detailed description: This system contains the final four measures of the piece. It features a vocal line with lyrics, a piano accompaniment, and guitar chord diagrams for F, G, and F/G. The piano accompaniment includes chords in the right hand and a bass line in the left hand.

F/G G Cm7

when - ev - er\_\_\_ you call, I will\_\_\_ be there,

*3*

F Cm7 F D.C. al  $\oplus$  Coda

yes I will\_\_\_ be there.

*3*

*Coda*  $\oplus$  Fm7 B $\flat$ /E $\flat$  A $\flat$ maj7/E $\flat$

we both know what\_\_\_ can hap - pen. So hold on\_\_\_ my heart,

E $\flat$  A $\flat$ maj7/E $\flat$  E $\flat$  Repeat to Fade

just hold on\_\_\_ my heart.