

Speed of Sound

Words and Music by Guy Berryman,
Will Champion, Chris Martin
and Jon Buckland

Voice

A5 Emi

Piano

4

D A5 Emi

4

Pno.

8

How long be-fore I get in, be-fore it starts, be-fore I be-gin?

Detailed description: This block shows the vocal line for measures 8 through 11. The melody starts with a quarter rest, followed by a dotted quarter note G4, then an eighth note A4, and a quarter note B4. This is followed by a quarter note C5, an eighth note B4, and a quarter note A4. The line continues with a quarter note G4, an eighth note F4, and a quarter note E4. The final measure contains a quarter note D4, an eighth note C4, and a quarter note B3.

Pno.

8

D A5 Emi

Detailed description: This block shows the piano accompaniment for measures 8 through 11. The right hand (RH) starts with a quarter rest, then plays a dotted quarter note G4, followed by eighth notes A4 and B4, and a quarter note C5. The RH continues with eighth notes B4 and A4, then quarter notes G4 and F4, and finally quarter notes E4 and D4. The left hand (LH) plays a whole note chord D4 in the first measure, followed by a half note chord A5 in the second measure, and a half note chord Emi in the third and fourth measures.

12

How long be-fore you de-cide, be-fore I know what it feels like?

Detailed description: This block shows the vocal line for measures 12 through 15. The melody starts with a quarter rest, followed by a dotted quarter note G4, then an eighth note A4, and a quarter note B4. This is followed by a quarter note C5, an eighth note B4, and a quarter note A4. The line continues with a quarter note G4, an eighth note F4, and a quarter note E4. The final measure contains a quarter note D4, an eighth note C4, and a quarter note B3.

Pno.

12

D A5 Emi

Detailed description: This block shows the piano accompaniment for measures 12 through 15. The right hand (RH) starts with a quarter rest, then plays a dotted quarter note G4, followed by eighth notes A4 and B4, and a quarter note C5. The RH continues with eighth notes B4 and A4, then quarter notes G4 and F4, and finally quarter notes E4 and D4. The left hand (LH) plays a whole note chord D4 in the first measure, followed by a half note chord A5 in the second measure, and a half note chord Emi in the third and fourth measures.

16

Where to, where do I go? If you nev - er try,

D

A5

Emi

16

Pno.

19

then you'll nev - er know. How long do I have to climb

D

A5

19

Pno.

22

up on the side of this moun - tain of mine?

Emi

D

22

Pno.

25

A5

Emi

25

Pno.

28



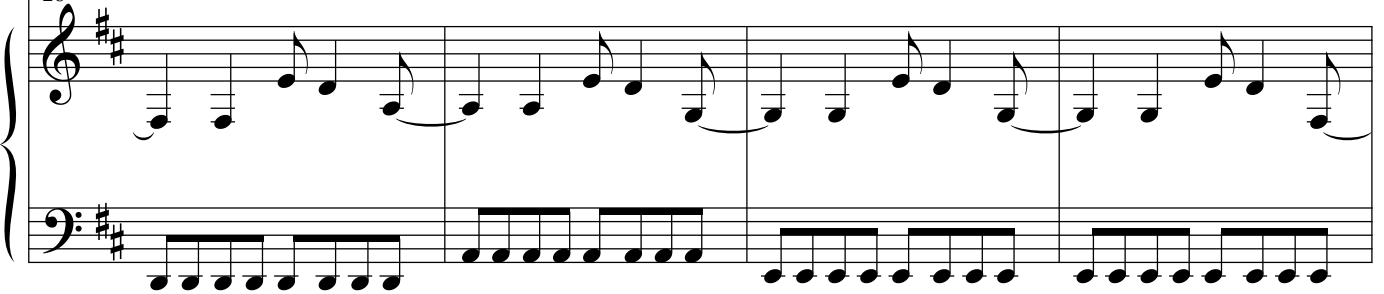
D

A5

E mi

28

Pno.



32



Look up, I look up at night.
I - deas that you'll nev - er find.

Plan - ets are mov -
All the in - ven -

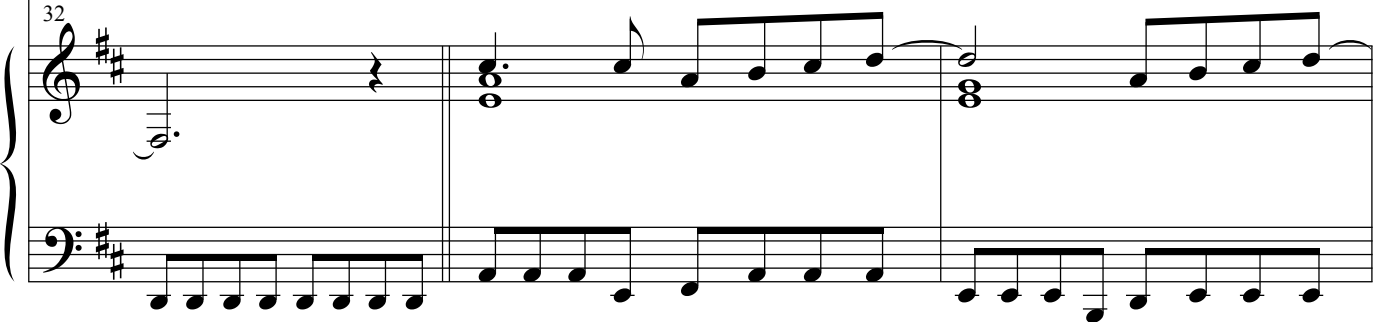
D

A5

E mi

32

Pno.



35

ing at the speed of light. Climb up, up in the trees.
 tors could nev - er de - sign the build - ings that you put up.

D

A5

Pno.

35

38

Ev - 'ry chance that you get is a chance you seize. How
 Like Ja - pan and Chi - na all lit up. A

Emi

D

Pno.

38

41

long am I gon - na stand with my head stuck un - der the sand?
 sign that I could - n't read or a light that I could - n't see.

A5

Emi

Piano accompaniment for measures 41-43, featuring chords A5 and Emi.

Pno.

44

I'll start be - fore I can stop, but be - fore I see
 Some things you have to be - lieve, but oth - ers are puz -

D

A5

Emi

Piano accompaniment for measures 44-46, featuring chords D, A5, and Emi.

Pno.

47

things the right way up. All that noise
zles, puz - zl - in' me.

D

G(add9)

Pno.

50

and all that sound. All those plac -

A(add9)

Bmi7

G(add9)

Pno.

54

Vocal staff for measures 54-57. The melody starts with a quarter note G4, followed by eighth notes A4, B4, C5, B4, A4, G4. There is a whole rest in measure 55. The staff ends with a double bar line and a repeat sign.

es I got found.

And birds go fly-in' at the

A(add9)

Bmi7

G

Pno.

Piano accompaniment for measures 54-57. The right hand plays chords: A(add9) in measure 54, Bmi7 in measure 55, and G in measure 56. The left hand plays a steady eighth-note bass line. The staff ends with a double bar line and a repeat sign.

58

Vocal staff for measures 58-61. The melody starts with a quarter note G4, followed by eighth notes A4, B4, C5, B4, A4, G4. There is a whole rest in measure 60. The staff ends with a double bar line and a repeat sign.

speed of sound to show ya how it all be-gan.

Birds

Bmi

D

G

Pno.

Piano accompaniment for measures 58-61. The right hand plays chords: Bmi in measure 58, D in measure 59, and G in measure 60. The left hand plays a steady eighth-note bass line. The staff ends with a double bar line and a repeat sign.

61 *To Coda*
came fly-in' from the un - der-ground. If you could see it then you'd un - der-stand.

Pno. 61 *To Coda*
Bmi F#mi

64 1. 2.
Ah, when you

Pno. 64 G G

67

Vocal staff for measures 67-70. The melody starts with a quarter note G4, followed by quarter notes A4, B4, and C5. The final measure contains a whole note G4.

see it then you'll un-der-sand.

Pno.

Piano accompaniment for measures 67-70. The right hand features chords and moving lines, with a final measure containing a whole note chord. The left hand plays a steady eighth-note accompaniment. Chord labels F#mi, G, and D5 are placed above the right-hand staff.

71

Vocal staff for measures 71-74, showing four whole rests.

Pno.

Piano accompaniment for measures 71-74. The right hand starts with a whole note chord, followed by a long Gsus2 chord spanning two measures, and ends with a quarter note G4. The left hand continues with an eighth-note accompaniment.

75

Vocal staff for measures 75-78. The staff is in treble clef with a key signature of two sharps (F# and C#). Measures 75-77 contain whole rests. In measure 78, the vocal line begins with a quarter note G4, followed by quarter notes A4 and B4.

All those signs,

D

G(add9)

Pno.

Piano accompaniment for measures 75-78. The right hand (RH) starts with a whole rest in measure 75. In measure 76, it plays a D major chord (D4, F#4, A4) with a fermata over it. In measure 77, it plays a G major chord with an added 9th (G4, B4, D5, E5). In measure 78, it plays a G major chord with an added 9th (G4, B4, D5, E5) in a dyad with the vocal line. The left hand (LH) plays a steady eighth-note bass line throughout.

79

Vocal staff for measures 79-82. The staff is in treble clef with a key signature of two sharps. Measure 79: quarter note G4, quarter note A4, quarter note B4, quarter note C5. Measure 80: quarter note B4, quarter note A4, quarter note G4, quarter note F#4. Measure 81: quarter note E4, quarter note D4, quarter note C4, quarter note B3. Measure 82: quarter note A3, quarter note G3, quarter note F#3, quarter note E3.

I knew what they meant. Some things you can't in-vent.

A(add9)

Bmi7

E7

Pno.

Piano accompaniment for measures 79-82. The right hand (RH) plays chords in a dyad with the vocal line. Measure 79: A major chord with added 9th (A4, C#5, E5, F#5). Measure 80: B minor 7th chord (B3, D4, F4, G4). Measure 81: E7 chord (E3, G3, B3, D4). Measure 82: E7 chord (E3, G3, B3, D4). The left hand (LH) plays a steady eighth-note bass line throughout.

82

Some get made and some get sent, ooh.

Pno.

G(add9) A(add9) Bmi7

85

D.S. al Coda ⊕ CODA

And Ah, when you see it then you'll un - der - stand.

Pno.

E7 *D.S. al Coda* ⊕ CODA G F#mi

88

Pno.

92

Pno.