

Burn This Disco Out

- R. Temperton

From the album "Off the Wall"
by Michael Jackson (1978)

Bass part by
Louis Johnson

♩ = 115

Elec. Bass



Verse



Pre-Chorus



Chorus



Verse

Two staves of bass clef musical notation in 4/4 time. The key signature has three flats (B-flat, E-flat, A-flat). The first staff contains four measures, and the second staff contains four measures, ending with a double bar line.

Pre-Chorus

Two staves of bass clef musical notation in 4/4 time. The key signature has three flats. The first staff contains four measures, and the second staff contains two measures, ending with a double bar line.

Chorus

One staff of bass clef musical notation in 4/4 time. The key signature has three flats. It contains four measures, ending with a double bar line.

Bridge

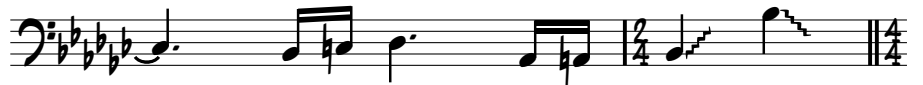
Two staves of bass clef musical notation in 4/4 time. The key signature has three flats. The first staff contains four measures, and the second staff contains four measures, including a triplet of eighth notes in the final measure. The section ends with a double bar line.

Verse

One staff of bass clef musical notation in 4/4 time. The key signature has three flats. It contains four measures, ending with a double bar line.



Pre-Chorus



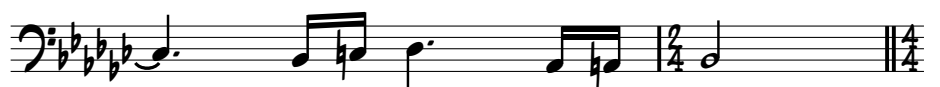
Chorus



Horns



Pre-Chorus



Out-Chorus





Outro

