

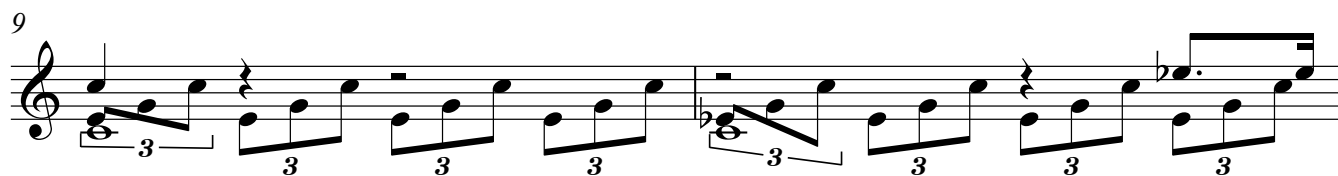
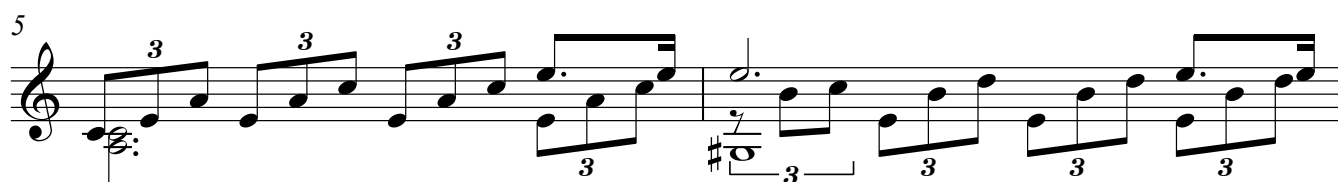
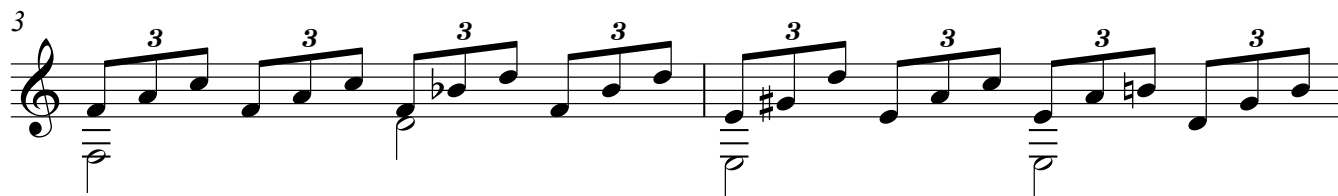
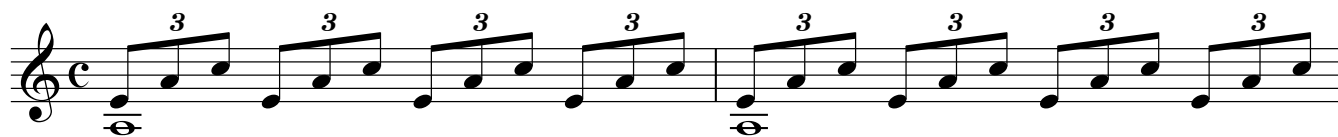
CLARO DE LUNA

(De la sonata Op - 14)

ARMONIZADO POR LUIS ALVAREZ

BEETHOVEN

♩=70



11

13

15

17

19

21

23

Musical notation for measures 23 and 24. Measure 23 contains two groups of eighth-note triplets. Measure 24 contains a dotted quarter note, a half note, and two groups of eighth-note triplets. The key signature has one sharp (F#).

25

Musical notation for measures 25 and 26. Measure 25 contains a dotted quarter note, a half note, and two groups of eighth-note triplets. Measure 26 contains a dotted quarter note, a half note, and two groups of eighth-note triplets. The key signature has two sharps (F# and C#).

27

Musical notation for measures 27 and 28. Measure 27 contains a dotted quarter note, a half note, and two groups of eighth-note triplets. Measure 28 contains two groups of eighth-note triplets. The key signature has two sharps (F# and C#).

29

Musical notation for measures 29 and 30. Measure 29 contains two groups of eighth-note triplets. Measure 30 contains two groups of eighth-note triplets. The key signature has two sharps (F# and C#).

31

Musical notation for measures 31 and 32. Measure 31 contains two groups of eighth-note triplets. Measure 32 contains two groups of eighth-note triplets. The key signature has two sharps (F# and C#).

33

Musical notation for measures 33 and 34. Measure 33 contains two groups of eighth-note triplets. Measure 34 contains two groups of eighth-note triplets. The key signature has two sharps (F# and C#).

35

Measures 35-36: Treble clef, key signature of one sharp (F#). Measure 35 contains a triplet of eighth notes (F#, G, A) and a triplet of quarter notes (B, C, D). A slur encompasses the entire measure. Measure 36 contains a triplet of eighth notes (E, F#, G), a triplet of quarter notes (A, B, C), and two eighth notes (D, E) each marked with a fermata. A slur encompasses the entire measure.

37

Measures 37-38: Treble clef, key signature of one sharp (F#). Measure 37 contains a triplet of eighth notes (F#, G, A), a triplet of quarter notes (B, C, D), and two eighth notes (E, F#) each marked with a fermata. A slur encompasses the entire measure. Measure 38 contains a triplet of eighth notes (G, A, B), a triplet of quarter notes (C, D, E), and two eighth notes (F#, G) each marked with a fermata. A slur encompasses the entire measure.

39

Measures 39-40: Treble clef, key signature of one sharp (F#). Measure 39 contains a triplet of eighth notes (F#, G, A), a triplet of quarter notes (B, C, D), and two eighth notes (E, F#) each marked with a fermata. A slur encompasses the entire measure. Measure 40 contains a triplet of eighth notes (G, A, B), a triplet of quarter notes (C, D, E), and two eighth notes (F#, G) each marked with a fermata. A slur encompasses the entire measure.

41

Measures 41-42: Treble clef, key signature of one sharp (F#). Measure 41 contains a triplet of eighth notes (F#, G, A), a triplet of quarter notes (B, C, D), and two eighth notes (E, F#) each marked with a fermata. A slur encompasses the entire measure. Measure 42 contains a triplet of eighth notes (G, A, B), a triplet of quarter notes (C, D, E), and two eighth notes (F#, G) each marked with a fermata. A slur encompasses the entire measure.

43

Measures 43-44: Treble clef, key signature of one sharp (F#). Measure 43 contains a triplet of eighth notes (F#, G, A), a triplet of quarter notes (B, C, D), and two eighth notes (E, F#) each marked with a fermata. A slur encompasses the entire measure. Measure 44 contains a triplet of eighth notes (G, A, B), a triplet of quarter notes (C, D, E), and two eighth notes (F#, G) each marked with a fermata. A slur encompasses the entire measure.

45

Measures 45-46: Treble clef, key signature of one sharp (F#). Measure 45 contains a triplet of eighth notes (F#, G, A), a triplet of quarter notes (B, C, D), and two eighth notes (E, F#) each marked with a fermata. A slur encompasses the entire measure. Measure 46 contains a triplet of eighth notes (G, A, B), a triplet of quarter notes (C, D, E), and two eighth notes (F#, G) each marked with a fermata. A slur encompasses the entire measure.

47

Musical notation for measures 47 and 48. Measure 47 contains two groups of triplets. Measure 48 contains a triplet, a quarter rest, a triplet, and another triplet.

49

Musical notation for measures 49 and 50. Measure 49 contains two groups of triplets. Measure 50 contains a triplet, a quarter rest, and two groups of triplets.

51

Musical notation for measures 51 and 52. Measure 51 contains two groups of triplets. Measure 52 contains a triplet, a quarter rest, and two groups of triplets.

53

Musical notation for measures 53 and 54. Measure 53 contains two groups of triplets. Measure 54 contains a triplet, a quarter rest, and two groups of triplets.

55

Musical notation for measures 55 and 56. Measure 55 contains two groups of triplets. Measure 56 contains a triplet, a quarter rest, and two groups of triplets.

57

59

61

63

65