

CHRISTMAS ALPHABET

C



'C' is for the CAN-DY trimmed a - round the Christ-mas tree.

E \flat ^o

G7



'H' is for the HAP-PI-NESS with all the fam - i - ly.

Dm

G

Dm

G



'R' is for the REIN-DEER pranc-ing by the win - dow pane.

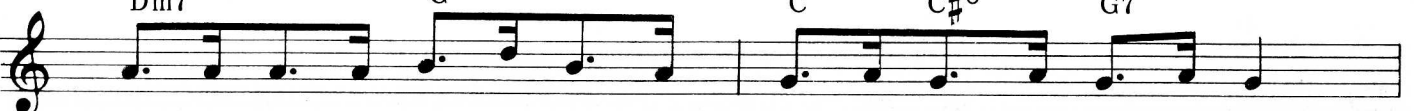
Dm7

G

C

C \sharp ^o

G7



'I' is for the IC - ING on the cake as sweet as su - gar cane.

Gm

C7

F

F7

D

D7



'S' is for the STOCK-ING on the chimney wall. 'T' is for the TOYS be -

G

G7

C

A9



neath the tree so tall. 'M' is for the MIS-TLETOE where ev-ery-one is kissed.

F

E7

Am

C7

F

Fm



'A' is for the ANGELS who make up the Christmas list. 'S' is for old SANTA who makes

C/E

A9

Dm

3

A7

Dm

3

C7



ev - ery kid his pet. Be good and he'll bring you ev-ery-thing in your

1

F

G7

C

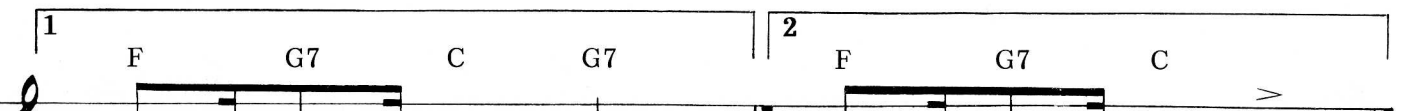
G7

2

F

G7

C



CHRIST-MAS AL - PHA-BET.

CHRIST-MAS AL - PHA-BET.