

Tenor Sax

# Father Time

Bob Mintzer

Intro Ad lib ♩ = 90

Asus<sup>4</sup> F#m<sup>7</sup> Dmaj<sup>7</sup>

**Solo**

Bm<sup>7</sup> A(add 9) F#m<sup>7</sup> Eb(#11)

Funk ♩ = 124

Asus<sup>2</sup>

... 12 8

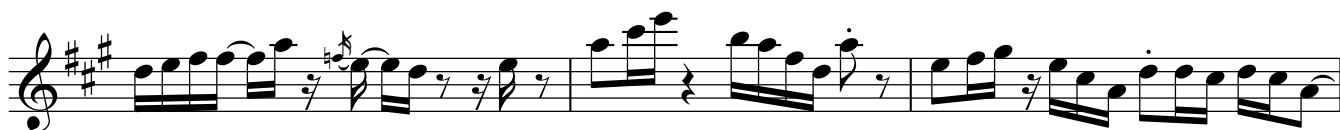
20

1. 2.

29



37



45



53

Cm7

B<sup>b</sup>m7

Cm7



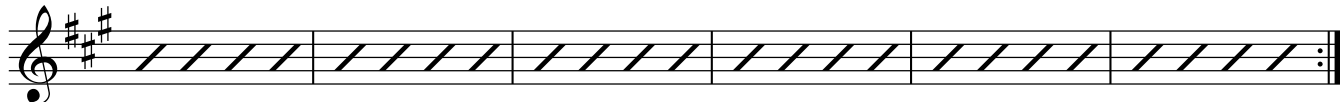
Piano & Sax solos

B<sup>b</sup>m7

A<sup>13</sup>

G<sup>#13</sup>

G(b9)



65



73



81



Coda



Trumpet

# Father Time

Bob Mintzer

Intro Ad lib ♩ = 90

Funk ♩ = 124

7

4

12

8

20

7

1.

2.

29

37

8

45

53 Cm7 Bbm7 Cm7

Piano & Sax solos

Bbm7 A13 G#13 G(b9)

65 8

73

81

Coda

# Father Time

Bob Mintzer

Intro Ad lib ♩ = 90 Funk ♩ = 124 12 8

The intro consists of four measures. The first measure is in 6/4 time and contains 7 measures of music. The second measure is in 4/4 time and contains 4 measures. The third measure is in 4/4 time and contains 12 measures. The fourth measure is in 4/4 time and contains 8 measures.

20 2nd time only

Measures 20-29: A melodic line starting with a repeat sign. Measure 20 is marked '20 2nd time only'. The line features eighth and sixteenth notes with various accidentals.

Measures 29-37: Continuation of the melodic line from the previous staff, featuring eighth and sixteenth notes.

Measures 37-45: Continuation of the melodic line, including a first ending (1.) and a second ending (2.) with a key signature change to B-flat.

29 8

Measures 45-53: A section consisting of 8 measures of music, marked with a box containing '29' and the number '8' below it.

37

Measures 53-61: A melodic line starting at measure 37, marked with a box containing '37'. It features eighth and sixteenth notes.


Measures 61-69: Continuation of the melodic line from the previous staff.

Measures 69-77: Continuation of the melodic line from the previous staff.

45 8

Measures 77-85: A section consisting of 8 measures of music, marked with a box containing '45' and the number '8' below it.

53  $B^{\flat}m7(11)$   $A^{\flat}m7(13)$   $B^{\flat}m7(11)$



Piano & Sax solos

$A^{\flat}m7(13)$   $G^{13}$   $F^{\#13}$   $F(b9)$




65



73



81 **Coda**  $Fm^9$   $D^{\flat}maj7(\#11)$   $B^{\flat}m^{11}$   $F^{\#m^{11}}$



$Fm^{11}$   $Dm^9$   $G(add4)$



Piano

# Father Time

Bob Mintzer

Intro Ad lib ♩ = 90

Gsus<sup>4</sup>

Em<sup>7</sup>

Cmaj<sup>7</sup>

3  
Play with sustain pedal

Am<sup>7</sup>

G(add<sup>9</sup>)

Em<sup>7</sup>

3  
D<sup>b</sup>(#11)

Funk ♩ = 124

Gsus<sup>2</sup>

12 Gsus<sup>4</sup>(add<sup>9</sup>)

Em<sup>11</sup>

D<sup>b</sup>maj<sup>7</sup>(#11)

Dm<sup>11</sup>

F<sup>5</sup>

G(add<sup>4</sup>)

Em<sup>11</sup>

C<sup>9</sup>sus<sup>4</sup>

D<sup>b</sup>/D

F<sup>5</sup>

20 Gsus<sup>4</sup>(add<sup>9</sup>)

Em<sup>11</sup>

D<sup>b</sup>maj<sup>7</sup>(#11)

Dm<sup>11</sup>

F<sup>9</sup>(#11)

G(add<sup>4</sup>)

Em<sup>11</sup>

C<sup>9</sup>sus<sup>4</sup>

1. D<sup>b</sup>/D

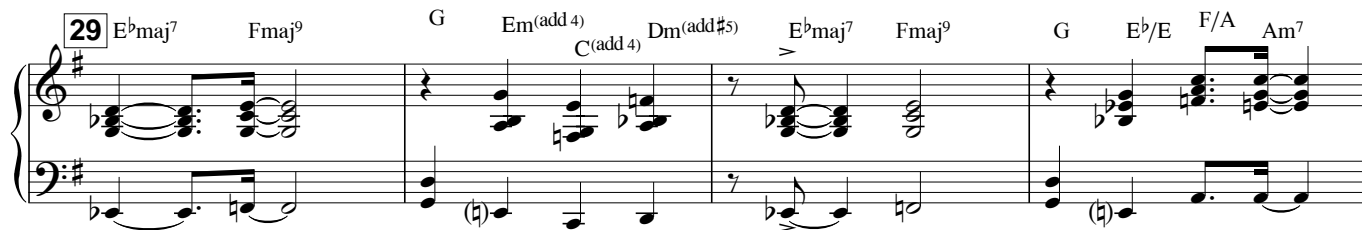
F<sup>5</sup>

2. Dm<sup>11</sup>

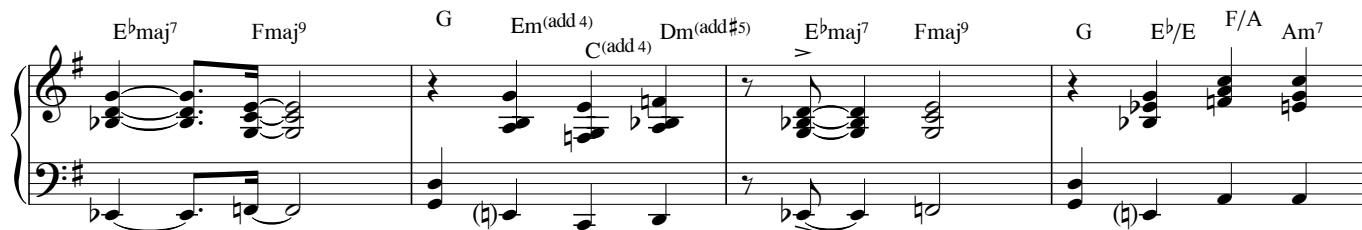
Csus<sup>4</sup>



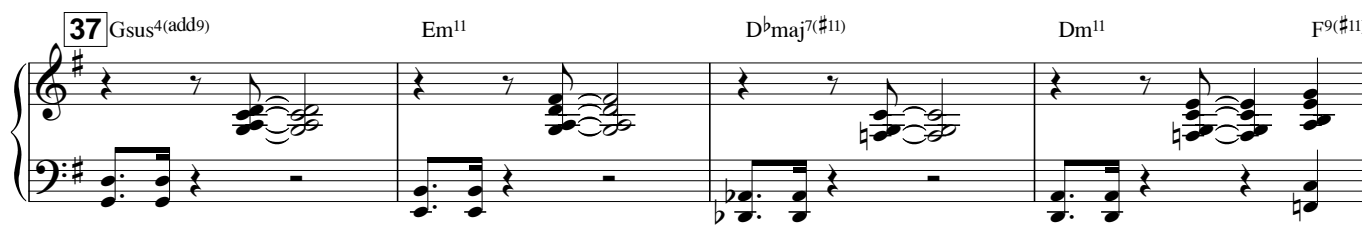
29 Ebmaj7 Fmaj9 G Em(add4) C(add4) Dm(add#5) Ebmaj7 Fmaj9 G Eb/E F/A Am7



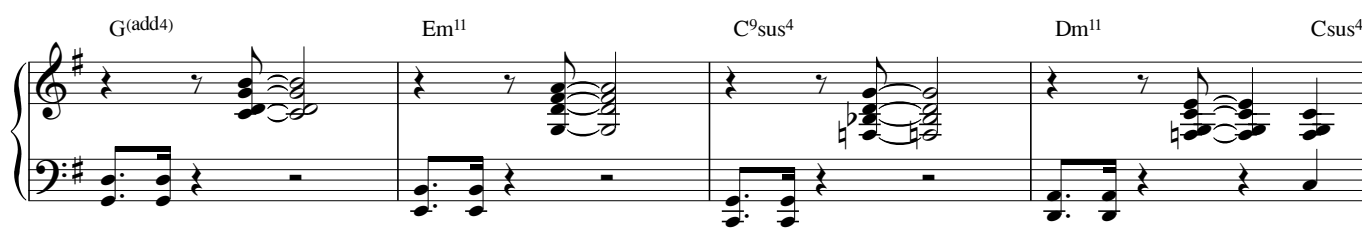
Ebmaj7 Fmaj9 G Em(add4) C(add4) Dm(add#5) Ebmaj7 Fmaj9 G Eb/E F/A Am7



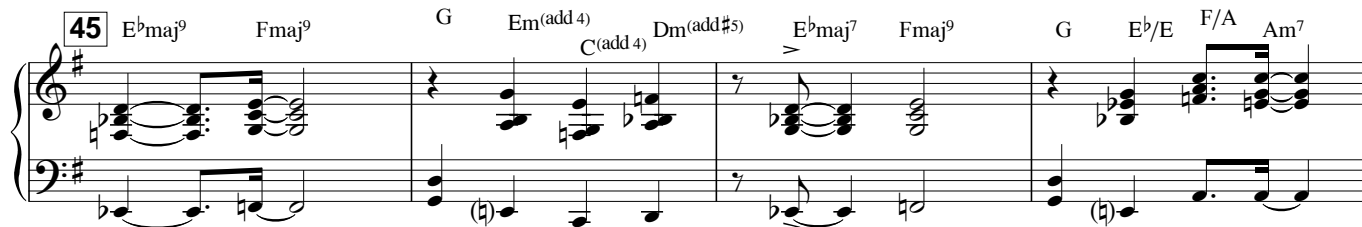
37 Gsus4(add9) Em11 Dbmaj7(#11) Dm11 F9(#11)



G(add4) Em11 C9sus4 Dm11 Csus4



45 Ebmaj9 Fmaj9 G Em(add4) C(add4) Dm(add#5) Ebmaj7 Fmaj9 G Eb/E F/A Am7

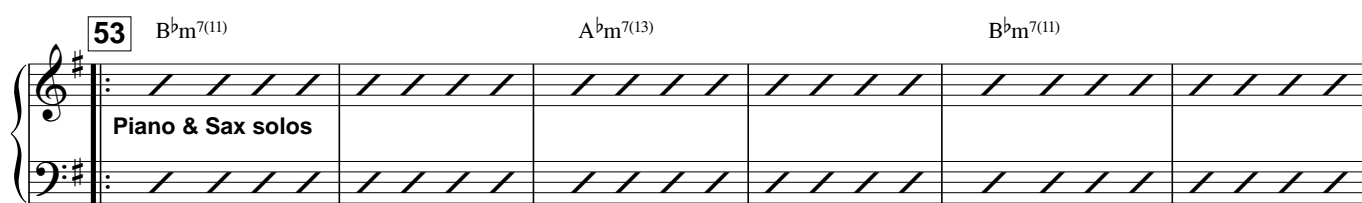


Ebmaj7 Fmaj9 G Em(add4) C(add4) Dm(add#5) Ebmaj7 Fmaj9 G Eb/E F/A Am7

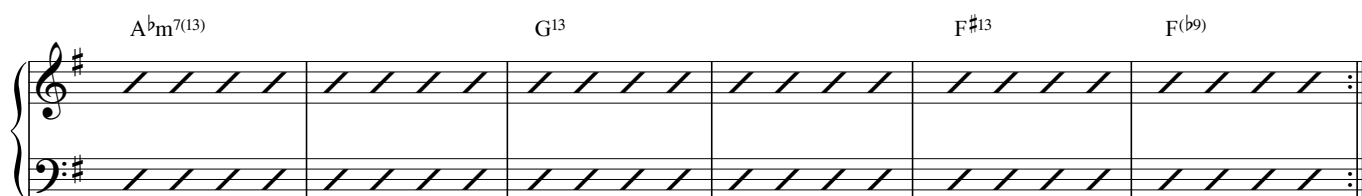


53 Bbm7(11) Abm7(13) Bbm7(11)

Piano & Sax solos



Abm7(13) G13 F#13 F(b9)



65 Gsus<sup>4</sup>(add9) Csus<sup>4</sup>(add9) Gsus<sup>4</sup>(add9) E<sup>b</sup>(add9) Dm<sup>11</sup>

Gsus<sup>4</sup>(add9) Csus<sup>4</sup>(add9) Gsus<sup>4</sup>(add9) E<sup>b</sup>(add9) D<sup>b</sup>maj<sup>7</sup>(#11)

73 Gsus<sup>4</sup>(add9) Csus<sup>4</sup>(add9) Gsus<sup>4</sup>(add9) E<sup>b</sup>(add9) Dm<sup>11</sup>

Gsus<sup>4</sup>(add9) Csus<sup>4</sup>(add9) Gsus<sup>4</sup>(add9) E<sup>b</sup>(add9) D<sup>b</sup>maj<sup>7</sup>(#11)

81 E<sup>b</sup>maj<sup>9</sup> Fmaj<sup>9</sup> G Em(add 4) C(add 4) Dm(add #5) E<sup>b</sup>maj<sup>7</sup> Fmaj<sup>9</sup> G E<sup>b</sup>/E F/A Am<sup>7</sup>

E<sup>b</sup>maj<sup>7</sup> Fmaj<sup>9</sup> G Em(add 4) C(add 4) Dm(add #5) E<sup>b</sup>maj<sup>7</sup> Fmaj<sup>9</sup> G Em(add 4) Fm<sup>9</sup> Coda

D<sup>b</sup>maj<sup>7</sup>(#11) B<sup>b</sup>m<sup>11</sup> F<sup>#</sup>m<sup>11</sup> Fm<sup>11</sup> Dm<sup>9</sup> G(add 4)

Bass Guitar

# Father Time

Bob Mintzer

Intro Ad lib ♩ = 90

Funk ♩ = 124

7

4

Intro staff with 7/4 and 4/4 time signatures.

12 Gsus<sup>4</sup>(add9) Em<sup>11</sup> D<sup>b</sup>maj<sup>7</sup>(#11) Dm<sup>11</sup> F<sup>5</sup>

Bass line for measures 12-15.

G(add4) Em<sup>11</sup> C<sup>9</sup>sus<sup>4</sup> D<sup>b</sup>/D F<sup>5</sup>

Bass line for measures 16-19.

20 Gsus<sup>4</sup>(add9) Em<sup>11</sup> D<sup>b</sup>maj<sup>7</sup>(#11) Dm<sup>11</sup> F<sup>9</sup>(#11)

Bass line for measures 20-23.

G(add4) Em<sup>11</sup> C<sup>9</sup>sus<sup>4</sup> 1. D<sup>b</sup>/D F<sup>5</sup> 2. Dm<sup>11</sup> Csus<sup>4</sup>

Bass line for measures 24-28.

29 E<sup>b</sup>maj<sup>7</sup> Fmaj<sup>9</sup> G Em(add4) Dm(add#5) E<sup>b</sup>maj<sup>7</sup> Fmaj<sup>9</sup> G E<sup>b</sup>/E F/A Am<sup>7</sup>

Bass line for measures 29-32.

E<sup>b</sup>maj<sup>7</sup> Fmaj<sup>9</sup> G Em(add4) Dm(add#5) E<sup>b</sup>maj<sup>7</sup> Fmaj<sup>9</sup> G E<sup>b</sup>/E F/A Am<sup>7</sup>

Bass line for measures 33-36.

37 Gsus<sup>4</sup>(add9) Em<sup>11</sup> D<sup>b</sup>maj<sup>7</sup>(#11) Dm<sup>11</sup> F<sup>9</sup>(#11)

Bass line for measures 37-40.

G(add4) Em<sup>11</sup> C<sup>9</sup>sus<sup>4</sup> Dm<sup>11</sup> Csus<sup>4</sup>

Bass line for measures 41-44.

45 E<sup>b</sup>maj<sup>9</sup> Fmaj<sup>9</sup> G Em(add4) Dm(add#5) E<sup>b</sup>maj<sup>7</sup> Fmaj<sup>9</sup> G E<sup>b</sup>/E F/A Am<sup>7</sup>

Bass line for measures 45-48.

E<sup>b</sup>maj<sup>7</sup> Fmaj<sup>9</sup> G Em(add 4) Dm(add#5) E<sup>b</sup>maj<sup>7</sup> Fmaj<sup>9</sup> G E<sup>b</sup>/E F/A Am<sup>7</sup>  
C(add 4)

53 B<sup>b</sup>m<sup>7</sup>

A<sup>b</sup>m<sup>7</sup>

Piano & Sax solos

B<sup>b</sup>m<sup>7</sup>

A<sup>b</sup>m<sup>7</sup>

G<sup>13</sup>

F<sup>#</sup>13

F(b9)

65

F<sup>5</sup>

G<sup>5</sup>

G<sup>5</sup>

E<sup>b</sup>(add9)

E<sup>b</sup><sup>5</sup>

Dm<sup>11</sup>

F<sup>5</sup>

G<sup>5</sup>

G<sup>5</sup>

E<sup>b</sup>(add9)

E<sup>b</sup><sup>5</sup>

D<sup>b</sup>maj<sup>7</sup>(#11)

73

F<sup>5</sup>

G<sup>5</sup>

G<sup>5</sup>

E<sup>b</sup>(add9)

E<sup>b</sup><sup>5</sup>

Dm<sup>11</sup>

F<sup>5</sup>

G<sup>5</sup>

G<sup>5</sup>

E<sup>b</sup>(add9)

E<sup>b</sup><sup>5</sup>

D<sup>b</sup>maj<sup>7</sup>(#11)

81

E<sup>b</sup>maj<sup>9</sup> Fmaj<sup>9</sup>

G

Em(add 4)

Dm(add#5)

E<sup>b</sup>maj<sup>7</sup>

Fmaj<sup>9</sup>

G

E<sup>b</sup>/E

F/A

Am<sup>7</sup>

E<sup>b</sup>maj<sup>7</sup> Fmaj<sup>9</sup>

G

Em(add 4)

Dm(add#5)

E<sup>b</sup>maj<sup>7</sup>

Fmaj<sup>9</sup>

G

Fm<sup>9</sup>

Em(add 4)

Coda

D<sup>b</sup>maj<sup>7</sup>(#11)

B<sup>b</sup>m<sup>11</sup>

F<sup>#</sup>m<sup>11</sup>

Fm<sup>11</sup>

Dm<sup>9</sup>

G(add 4)

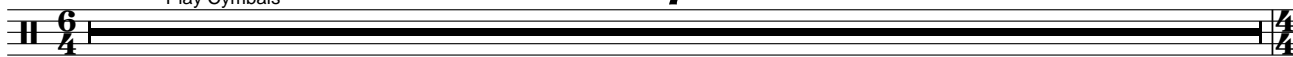
Drums

# Father Time

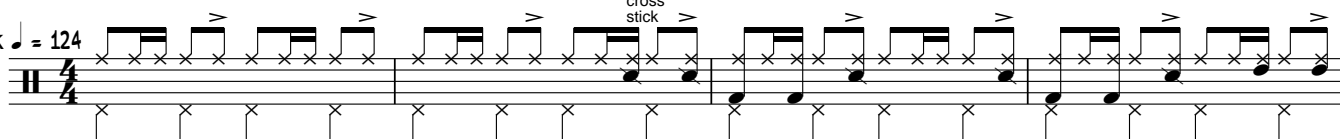
Bob Mintzer

Intro Ad lib ♩ = 90  
Play Cymbals

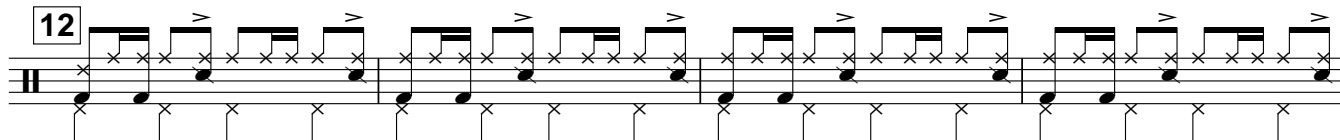
7



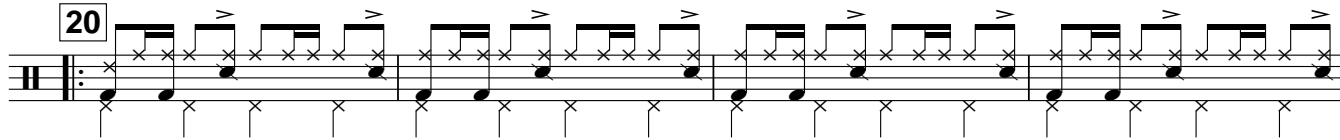
Funk ♩ = 124



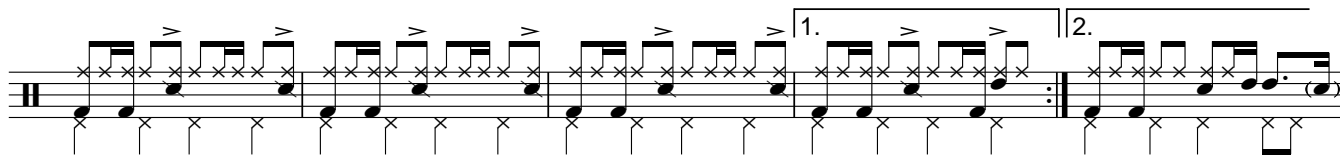
12



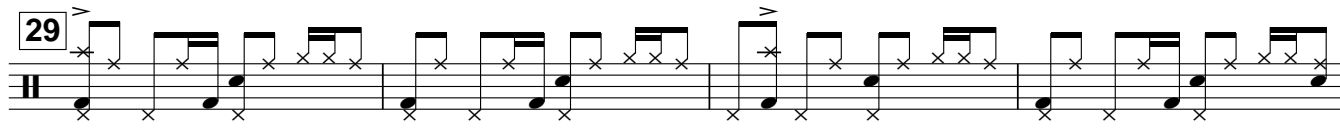
20



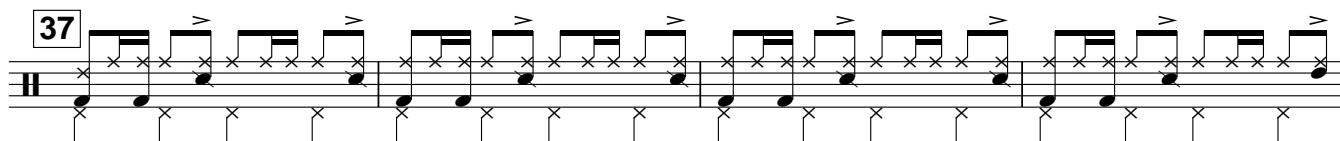
1. 2.



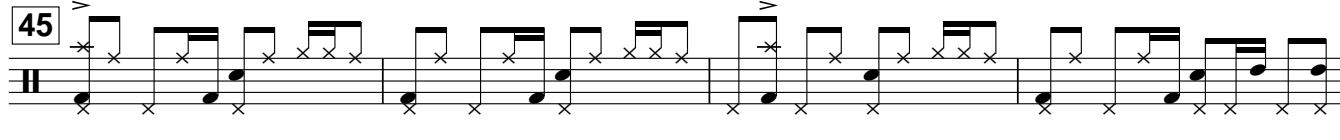
29



37



45



53

Piano & Sax solos

65

ride bell

73

81

Coda