

# Baby, I Love You

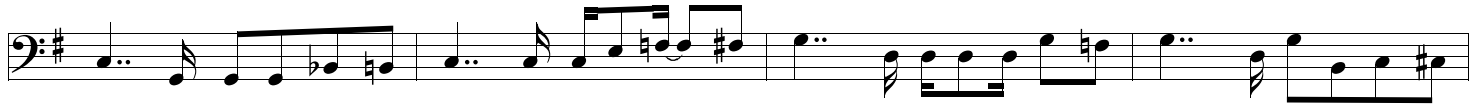
Bass Line originally played by Tommy Cogbill  
Transcribed by Pierre Verger, 1975  
For an easier study, my advice to you is to buy the original recording

As recorded by Aretha Franklin, June 23, 1967  
Composer : Ronnie Shannon  
From the recorded album " Aretha Arrives " Atlantic #8150

1 ♩ = 90



5



9



13



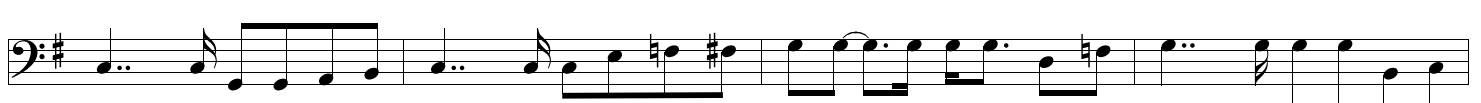
17



22



26



30



34



38



43

A single bass line for measure 43. It begins with a half rest, followed by a quarter note G2, then eighth notes G2-A2-B2. The second half of the measure contains eighth notes B2-C3, quarter notes D3-E3, eighth notes F3-G3, and a quarter note G3.

47

A single bass line for measure 47. It begins with a half rest, followed by eighth notes G2-A2-B2. The second half of the measure contains eighth notes C3-D3, quarter notes E3-F3, eighth notes G3-A3, and a quarter note B3.

51

A single bass line for measure 51. It begins with a half note G2, followed by eighth notes G2-A2-B2. The second half of the measure contains eighth notes C3-D3, quarter notes E3-F3, eighth notes G3-A3, and a quarter note B3.

55

A single bass line for measure 55. It begins with a half rest, followed by eighth notes G2-A2-B2. The second half of the measure contains eighth notes C3-D3, quarter notes E3-F3, eighth notes G3-A3, and a quarter note B3.

59

A single bass line for measure 59. It begins with a half rest, followed by eighth notes G2-A2-B2. The second half of the measure contains eighth notes C3-D3, quarter notes E3-F3, eighth notes G3-A3, and a quarter note B3. The text "Fade Out" is written above the staff.