

Give Me The Night

George Benson

Intro

Fivestring Bass



4



8

Verse: Whenever dark has fallen you know the



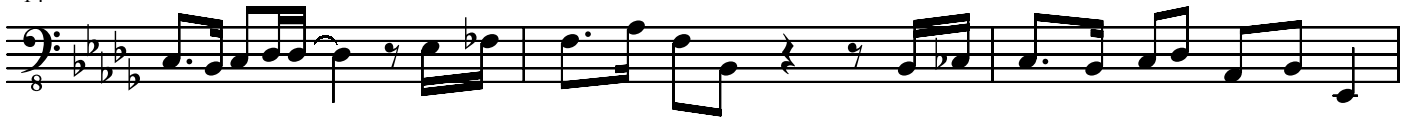
11

spirit of the party starts to come alive. Until the day is dawning



14

you can throw out all the blues and hit the city lights 'Cause there's



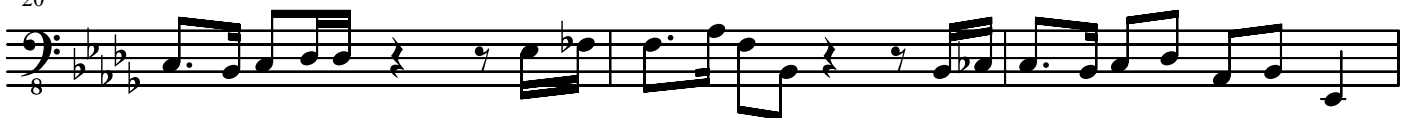
17

music in the air and lots of loving so gimme the night



20


Gimme the night You need that



23 evening action a place to dine, a glass of wine, and little

Musical notation for line 23, featuring a bass clef, a key signature of two flats, and a time signature of 8/8. The melody consists of eighth and quarter notes with some rests.


26 late romance. It's a chain re-action You'll see the

Musical notation for line 26, continuing the melody with eighth and quarter notes.

29 people of the world coming out to dance 'Cause there's

Musical notation for line 29, continuing the melody with eighth and quarter notes.


31 music in the air and lots of loving everywhere so gimme the night.

Musical notation for line 31, including a sixteenth note triplet and a quarter note.

34 Gimme the night Chorus: So come on

Musical notation for line 34, starting the chorus with eighth and quarter notes.

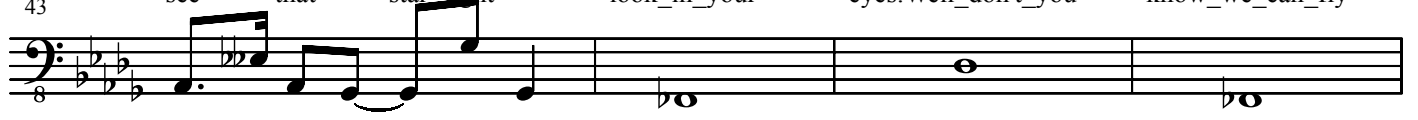
37 out to - night and we'll lead the others on a ride to na - ra -

Musical notation for line 37, continuing the chorus with eighth and quarter notes.

40 dise And if you feel all-right then we can be lo - vers 'cause I

Musical notation for line 40, including a sixteenth note triplet and a quarter note.

43 see that star-light look_in_your eyes.Well_don't_you know_we_can_fly

Musical notation for line 43, ending with a whole note and a half note.

