

# WATER MUSIC

for String Quartet

G. F. HÄNDEL  
(1685 - 1759)

Cello

## Air (No. 5)

Musical score for Air (No. 5) in Cello part. The score is written in bass clef with a key signature of one flat (B-flat) and a common time signature (C). It consists of three staves of music. The first staff begins with a treble clef and a common time signature, followed by a bass clef and a common time signature. The second staff begins with a treble clef and a common time signature, followed by a bass clef and a common time signature. The third staff begins with a treble clef and a common time signature, followed by a bass clef and a common time signature. The piece concludes with a double bar line and repeat dots.

## Bourrée (No. 7)

Musical score for Bourrée (No. 7) in Cello part. The score is written in bass clef with a key signature of one flat (B-flat) and a common time signature (C). It consists of three staves of music. The first staff begins with a treble clef and a common time signature, followed by a bass clef and a common time signature. The second staff begins with a treble clef and a common time signature, followed by a bass clef and a common time signature. The third staff begins with a treble clef and a common time signature, followed by a bass clef and a common time signature. The piece concludes with a double bar line and repeat dots.

## Hornpipe (No. 8)

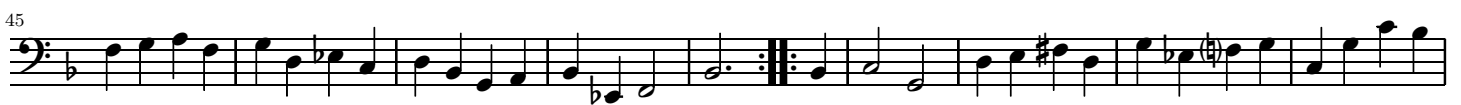
Musical score for Hornpipe (No. 8) in Cello part. The score is written in bass clef with a key signature of one flat (B-flat) and a 3/2 time signature. It consists of two staves of music. The first staff begins with a treble clef and a 3/2 time signature, followed by a bass clef and a 3/2 time signature. The second staff begins with a treble clef and a 3/2 time signature, followed by a bass clef and a 3/2 time signature. The piece concludes with a double bar line and repeat dots.



## Menuet (No. 12)



## Rigaudon (No. 13)

*D.C. al Fine*