

Jongo

Paulo Bellinati
(Geneva, 1978)
(São Paulo, 1982)

M
♩. = 140 *a m a*

i m a

gliss.

p ; p m ; a i m i a m i

Musical staff with treble clef, key signature of two sharps (F# and C#), and a 3/4 time signature. The melody consists of eighth and quarter notes. Fingering numbers 2, 1, 0, 4, 1, 0, 3, 2 are indicated above the notes. The bass line consists of quarter notes with bar lines.

Musical staff with treble clef, key signature of two sharps (F# and C#), and a 3/4 time signature. The melody consists of eighth and quarter notes. Fingering number 0 is indicated above a note. The bass line consists of quarter notes with bar lines.

ΦVII

Musical staff with treble clef, key signature of two sharps (F# and C#), and a 3/4 time signature. The melody features a triplet of eighth notes and a quarter note. Fingering numbers 3, 2, 4, 3, 2, 1 are indicated above the notes. The bass line consists of quarter notes with bar lines.

ΦII ΦIV ΦII

Musical staff with treble clef, key signature of two sharps (F# and C#), and a 3/4 time signature. The melody features a triplet of eighth notes and a quarter note. Fingering numbers 3, 2 are indicated above the notes. The bass line consists of quarter notes with bar lines.

♩ CI CIII CV CIII CV

gliss.

Musical staff with treble clef, key signature of two flats (Bb and Eb), and a 3/4 time signature. The melody features a triplet of eighth notes and a quarter note. Fingering numbers 4, 3, 7, 3, 4 are indicated above the notes. The bass line consists of quarter notes with bar lines.

CIV CVI CVIII CVI

gliss.

Musical staff with treble clef, key signature of two flats (Bb and Eb), and a 3/4 time signature. The melody features a triplet of eighth notes and a quarter note. Fingering numbers 7, 3, 4 are indicated above the notes. The bass line consists of quarter notes with bar lines.

ϕV

CVI CVIII CX CVIII ϕX

gliss.

f cresc. sempre

i m a (simile)

③ ②
3 4 0
mf cresc. poco a poco
0 2 1 2 1 0 2
⑥ ⑤ ⑤ ① ① ⑥

3 4 0
2 1 1 1 1 2
⑥ ④ ⑤ ① ① ⑤

3 4 0
1 1 1 2 1 2
⑥ ④ ⑤ ① ① ⑤

3 4 0
2 2 2 0 3 0 4
④ ③ ②

3 4 0
2 2 2 0 3 0 4
④ ③ ②

3 4 0
2 2 2 0 3 0 4
④ ③ ②

cresc. sempre

ϕV

CVIII

mp

CIV

CVI

CIV

ϕVI

3b 4b b2

4 2

CVIII

CVI

CVIII

gliss.

7 3 b2 b4 1 b4 4 3 5 4 6 5 4

Musical staff with treble clef, key signature of two sharps (F# and C#), and a 4/4 time signature. It features a melody with various note values and rests, and a bass line with chords. Fingerings are indicated by circled numbers 2, 3, and 4. A dynamic marking 'f' is present at the start. A rehearsal mark 'ΦII' is at the end.

Musical staff with treble clef, key signature of two sharps, and a 4/4 time signature. It features a melody with various note values and rests, and a bass line with chords. A dynamic marking '>' is present above the staff.

CII CII CII - - - - - 1 CII

Musical staff with treble clef, key signature of two sharps, and a 4/4 time signature. It features a series of chords in the bass line. A rehearsal mark 'CII' is at the end.

~~VII~~
ΦIII - - - - - 1 ΦV

Musical staff with treble clef, key signature of two sharps, and a 4/4 time signature. It features a series of chords in the bass line. A rehearsal mark 'ΦV' is at the end.

ΦIX - - - - - 1 ΦIX - - - - - 1

i m a i a *i m a i a*

Musical staff with treble clef, key signature of two sharps, and a 4/4 time signature. It features a melody with various note values and rests, and a bass line with chords. Fingerings are indicated by circled numbers 2, 3, and 4. A dynamic marking 'p' is present at the start. A rehearsal mark 'ΦIX' is at the end.

Musical staff with treble clef, key signature of two sharps, and a 4/4 time signature. It features a melody with various note values and rests, and a bass line with chords. Fingerings are indicated by circled numbers 2, 3, and 4.

♩VII ----- ♩V

♩II -----

♩I ----- ♩III ----- ♩III ----- ♩I -----

② *gliss.* ③ ④ ③ ⑤ ④

③

♩VI ----- ♩VIII ----- *gliss.* ④ ③ ②

First musical staff with treble clef, key signature of two sharps (F# and C#), and a 2/4 time signature. It features a series of eighth-note triplets and sixteenth-note patterns. Fingerings are indicated by numbers 1, 2, 3, and 4. The bass line consists of quarter notes.

ΦVII

Second musical staff, continuing the piece. It includes handwritten annotations above the staff, such as 'm' and 'w'. The notation continues with eighth-note triplets and sixteenth-note patterns.

ΦIX

Third musical staff, featuring a handwritten '4' above the first measure and 'ΦIX' to the right. The notation includes eighth-note triplets and sixteenth-note patterns.

ΦI

ΦII

Fourth musical staff, containing handwritten annotations 'ΦI' and 'ΦII'. It includes a circled '2' above a measure and a circled '2' above a note. The notation includes eighth-note triplets and sixteenth-note patterns.

ff

Fifth musical staff, starting with the dynamic marking 'ff' (fortissimo). It includes circled numbers 4, 3, and 2 above the staff. The notation includes eighth-note triplets and sixteenth-note patterns.

Sixth musical staff, continuing the piece with eighth-note triplets and sixteenth-note patterns. It includes circled numbers 4, 3, and 2 above the staff.

Musical staff with notes and fingerings. Fingerings are indicated by numbers 1, 2, 3, 4. A circled '2' is above a note.

♯VII - - - - -

Musical staff with notes and fingerings. Fingerings are indicated by numbers 1, 2, 3, 4. A circled '2' is above a note. The staff ends with a double bar line and a repeat sign.

CII

CI - - - - -

Musical staff with notes and fingerings. Fingerings are indicated by numbers 2, 4, 8. The staff includes accents (>) and a *p legato* marking.

p legato

CIV - - - - -

Musical staff with notes and fingerings. Fingerings are indicated by numbers 3, 4, 8. The staff includes accents (>) and a *cresc. poco a poco* marking.

cresc. poco a poco

CIII - - - - -

Musical staff with notes and fingerings. Fingerings are indicated by numbers 4, 8. The staff includes accents (>).

CVI - - - - -

Musical staff with notes and fingerings. Fingerings are indicated by numbers 4, 8. The staff includes accents (>).

Musical staff with notes and fingerings. Fingerings are indicated by circled numbers: ④, 0, ③, ②. The staff ends with a double bar line.

(optional)
percussion section
see page 13

Musical staff with chords and dynamics. Dynamics include *f* and *ff*. The staff features a series of chords with long horizontal lines above them, indicating sustained notes.

Musical staff with chords and dynamics. Dynamics include *f* and *ff*. The staff features a series of chords with long horizontal lines above them, indicating sustained notes.

Musical staff with chords and dynamics. Dynamics include *f* and *ff*. The staff features a series of chords with long horizontal lines above them, indicating sustained notes.

Musical staff with chords and dynamics. Dynamics include *f* and *ff*. The staff features a series of chords with long horizontal lines above them, indicating sustained notes.

ΦIII ΦII ΦV

D. S. al Coda

♩ Coda

gliss.

CH

ΦVII

CII

ff

gliss.

CII ΦIII

CH

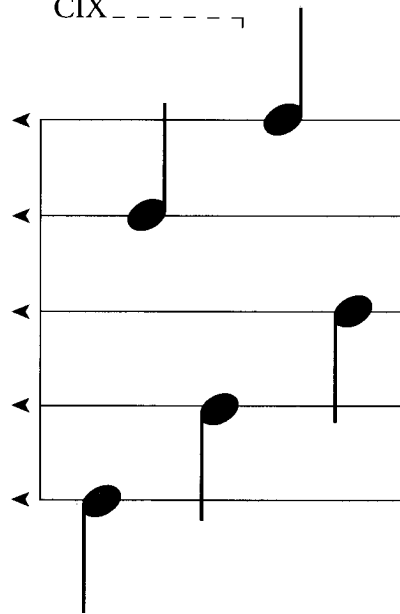
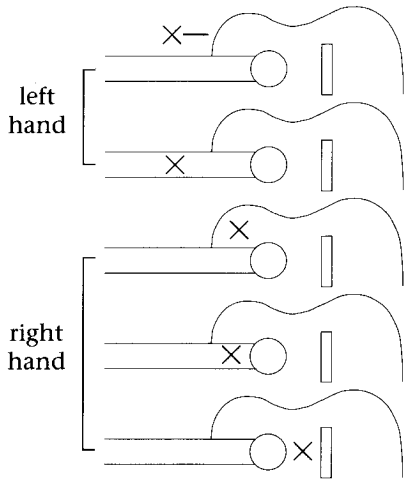
rall.

p → *i m*

PERCUSSION SECTION

barre 2, 3, and 4 fingers - only to mute
(do not depress or fret the strings)

CIX - - - - -



Slap left palm against the guitar's side
(wood sound).

Slap the strings against the fingerboard with left
hand fingers 2, 3, & 4 (keep the barre).

Slap the right hand against the guitar's top
(wood sound).

Slap the strings against the fingerboard
with left hand fingers (keep the barre).

Slap the right hand against the strings near the
bridge (bass sound) (keep the barre).

4X (CIX) A 7 B (CIX) 7

4X (CIX) C 7 (CIX) 7

D 7 E 7

3X (CIX) (CIX) 7

(CIX) - - - - -

- 1) Patterns A, B, C, D, & E can be played in different orders or combinations.
- 2) The number of repeats for each pattern can be also improvised.
- 3) The player can also improvise new patterns keeping the "Jongo" style.