

# BRIDGE OVER TROUBLED WATER

POP

MUSIC BY SIMON & GARFUNKEL

ARR. BY DR. NG 대략난감

VOCAL

A.PIANO



5



8

when you're



11

wear - ry feel - ing small when tears are



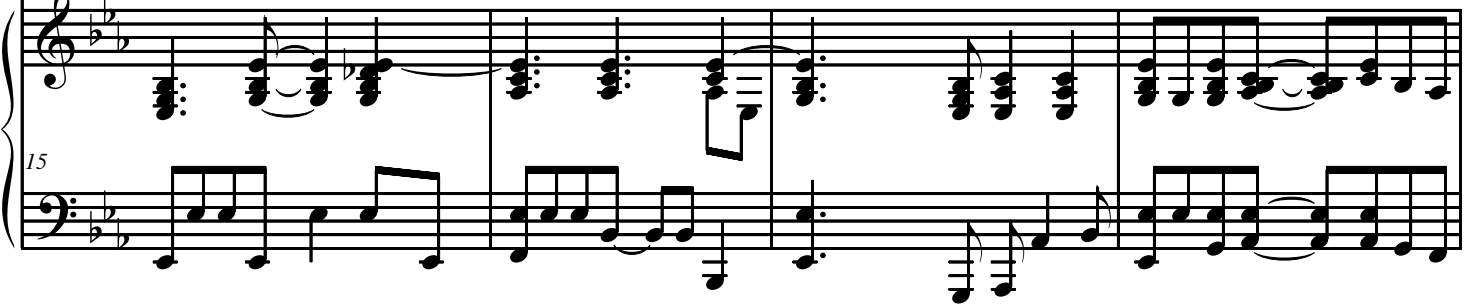
# BRIDGE OVER TROUBLED WATER

2

15



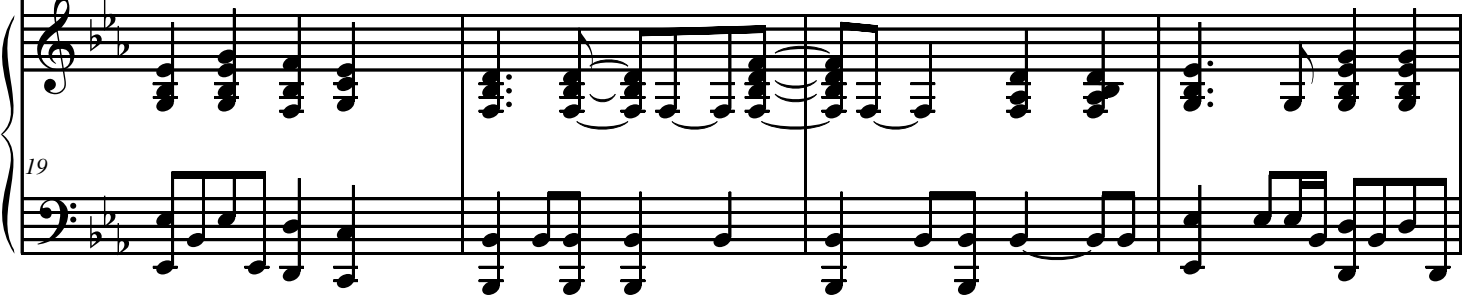
15



19



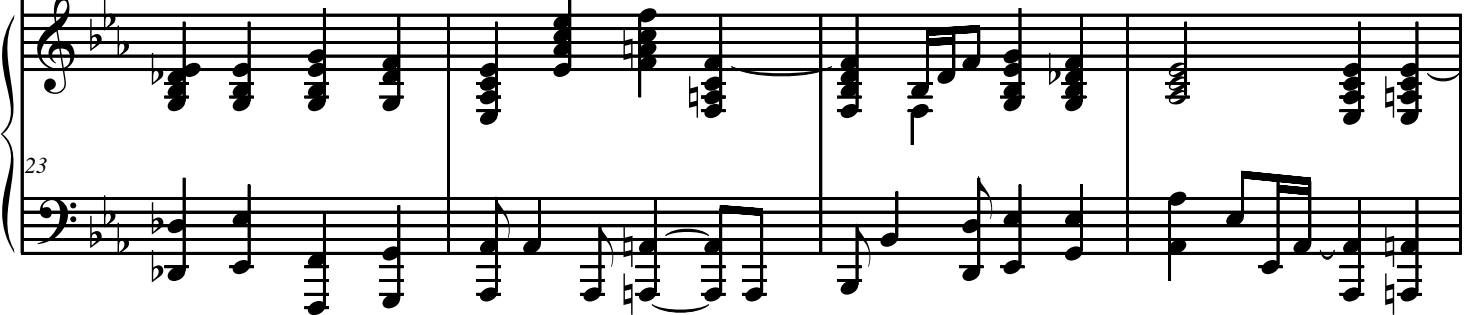
19



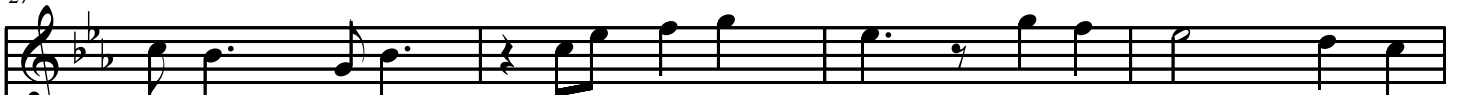
23



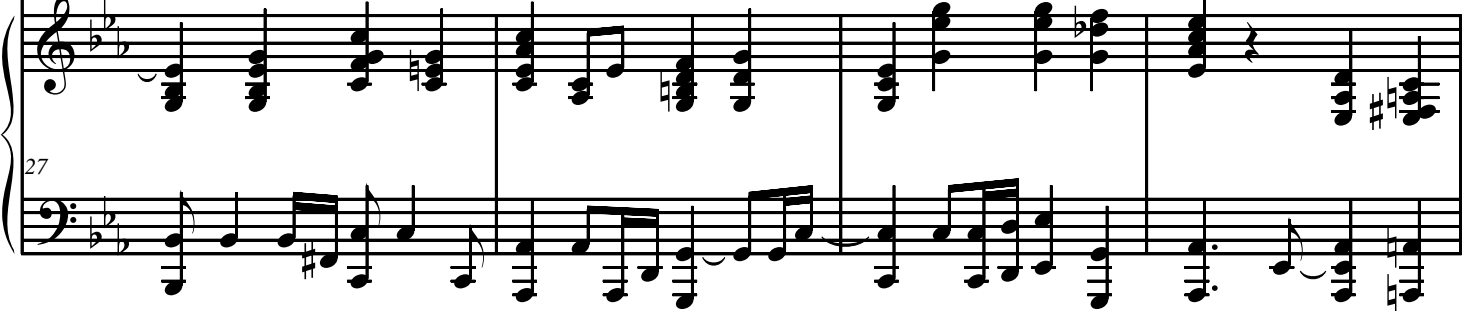
23



27



27



BRIDGE OVER TROUBLED WATER

31

31

trou-bled wa-ter I 'll lay me down

35

35

When you're

39

39

down and out when you're on the street

42

42

when eve - ning falls so hard I will

# BRIDGE OVER TROUBLED WATER

4

45

com-for-t you oh I'll take your part oh

This system contains measures 45 through 48. It features a vocal line with lyrics and piano accompaniment. The piano part consists of a steady eighth-note accompaniment in the bass clef and chords in the treble clef.

49

49

when dar-k - ness co-me-s And pain is all a - round

This system contains measures 49 through 52. The vocal line continues with the lyrics. The piano accompaniment maintains the same rhythmic pattern.

53

53

Like a bridge o - ver trou- bled wa - ter

This system contains measures 53 through 55. The piano accompaniment features a more complex texture with some chords in the treble clef.

56

56

I 'll lay me down Like a bridge o - ver trou- bled wa- ter

This system contains measures 56 through 59. The piano accompaniment continues with the established accompaniment.

BRIDGE OVER TROUBLED WATER

60

I 'll lay me down

63

67

70

Sail on sil-ver girl sail on

# BRIDGE OVER TROUBLED WATER

6  
74

by your time has come to shine

74

74

74

Detailed description: This system contains measures 74, 75, and 76. The vocal line starts with a whole note 'by' on measure 74, followed by 'your time has come' across measures 75 and 76, and 'to shine' on a half note in measure 76. The piano accompaniment features a steady eighth-note bass line in the left hand and chords in the right hand.

77

And your dreams are on the-ir way oh

77

77

77

Detailed description: This system contains measures 77, 78, and 79. The vocal line begins with 'And your dreams are on the-ir way' across measures 77 and 78, followed by 'oh' on a half note in measure 79. The piano accompaniment continues with similar rhythmic patterns.

80

See how they shine oh if you need a friend

80

80

80

Detailed description: This system contains measures 80, 81, 82, and 83. The vocal line starts with 'See how they shine' across measures 80 and 81, followed by 'oh' on a half note in measure 82, and 'if you need a friend' across measures 83 and 84. The piano accompaniment features a consistent eighth-note bass line.

84

I'm sail - ing right be - hind Like a bridge o - ver

84

84

84

Detailed description: This system contains measures 84, 85, 86, and 87. The vocal line begins with 'I'm sail - ing right be - hind' across measures 84 and 85, followed by 'Like a bridge o - ver' across measures 86 and 87. The piano accompaniment maintains the eighth-note bass line and chordal accompaniment.

# BRIDGE OVER TROUBLED WATER

88

88

trou-bled wa-ter I will ease your mind Like a bridge o-ver

88

88

Detailed description: This system contains measures 88 through 91. It features a vocal line in the upper staff and a piano accompaniment in the lower two staves. The lyrics are: "trou-bled wa-ter I will ease your mind Like a bridge o-ver". The piano part includes a melodic line in the right hand and a bass line in the left hand.

92

92

trou-ble-d wa-ter I will ease your mind

92

92

Detailed description: This system contains measures 92 through 94. The lyrics are: "trou-ble-d wa-ter I will ease your mind". The musical notation continues with the vocal line and piano accompaniment.

95

95

95

95

Detailed description: This system contains measures 95 through 98. It features the vocal line and piano accompaniment. The piano part has a more active bass line in the left hand.

99

99

99

99

Detailed description: This system contains measures 99 and 100. It features the vocal line and piano accompaniment. The piano part has a sustained chord in the right hand and a simple bass line in the left hand.