

RODE WIJN

INTRO

C F C F C G G⁷ C

The Intro section consists of eight measures in 4/4 time. The notes are: C4 (quarter), F4 (quarter), C4 (quarter), F4 (quarter), C4 (quarter), G4 (quarter), G5 (quarter), and C5 (quarter). The chords are: C (measures 1-2), F (measures 3-4), C (measures 5-6), G (measures 7-8), and G7 (measures 9-10).

STROFE (1STE X ALLEEN PIANO)

C F G⁷ C C F G⁷ C C E E Am F G⁷ C

The first verse consists of ten measures, each containing a single chord: C, F, G7, C, C, F, G7, C, C, E, E, Am, F, G7, C.

REFREIN

F E Am F G⁷ C F C F C G G⁷ C

The first chorus consists of ten measures, each containing a single chord: F, E, Am, F, G7, C, F, C, F, C, G, G7, C.

STROFE

C F G⁷ C C F G⁷ C C E E Am F G⁷ C

The second verse consists of ten measures, each containing a single chord: C, F, G7, C, C, F, G7, C, C, E, E, Am, F, G7, C.

REFREIN

F E Am F G⁷ C F C F C G G⁷ C

The second chorus consists of ten measures, each containing a single chord: F, E, Am, F, G7, C, F, C, F, C, G, G7, C.

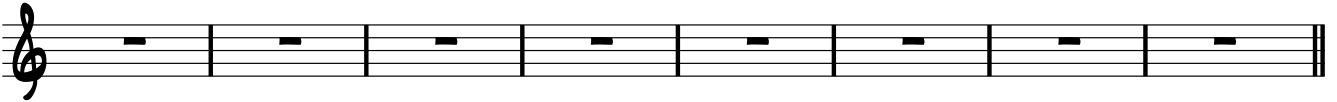
BRIDGE

F G Am F E Am F E Am Dm G

The bridge consists of seven measures, each containing a single chord: F, G, Am, F, E, Am, F, E, Am, Dm, G.

STROFE

C F G⁷ C C F G⁷ C C E E Am F G⁷ G⁷ C



SOLO

C F C F C G⁷ G⁷ C

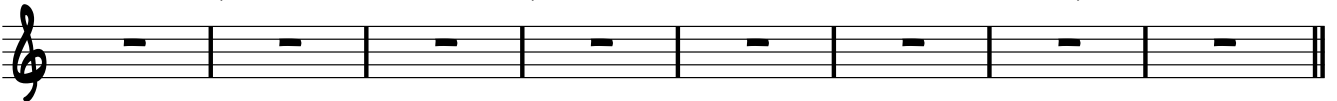


C F C F C G⁷ G⁷ C



STROFE

C F G⁷ C C F G⁷ C C E E Am F G⁷ C



REFREIN

F E Am F G⁷ C F C F C G G⁷ C

