

SUN'S GONNA SHINE

(Medium Ballad)

$\text{♩} = 76$

is this a game, this is not its insane Am?

In tempo

Handwritten musical score for the first system. It features a vocal line in treble clef and a piano accompaniment in bass clef. The key signature is B-flat major (two flats) and the time signature is 4/4. The tempo is marked as 'Medium Ballad' with a quarter note equal to 76 beats per minute. The piano part includes dynamic markings like '(mp)' and various chords such as Eb, Bb9, Eb, Bb11, Eb, Eb7/G, and Ab. The vocal line has lyrics: 'is this a game, this is not its insane Am?'.

leaving a Hell to be Free

Can it be right there de-nied the light Till to-

(sim. sparse fills)

Handwritten musical score for the second system. It continues the vocal line and piano accompaniment. The piano part includes chords like Eb, Bb, Bb11, Eb, Eb7/G, and Ab. The vocal line has lyrics: 'leaving a Hell to be Free' and 'Can it be right there de-nied the light Till to-'. The tempo marking '(sim. sparse fills)' is present.

day hopes insight now for me can it be For the sun never shines on the

(Lightly)

Handwritten musical score for the third system. It continues the vocal line and piano accompaniment. The piano part includes chords like Eb, Bb, Bb, and Eb (mp). The vocal line has lyrics: 'day hopes insight now for me can it be For the sun never shines on the'. The tempo marking '(Lightly)' is present.



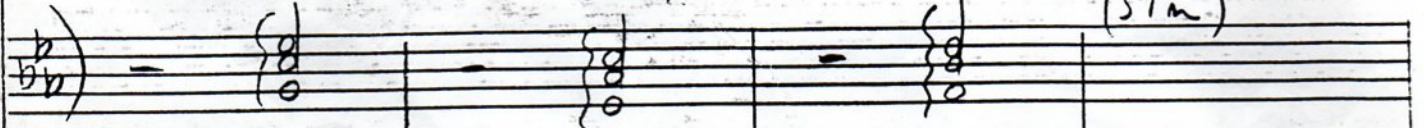
rules never bend not a sinner of light ever reaches me pain never ends, All my nights have been long All my

8va 7

8va 7

so the

(Sim)

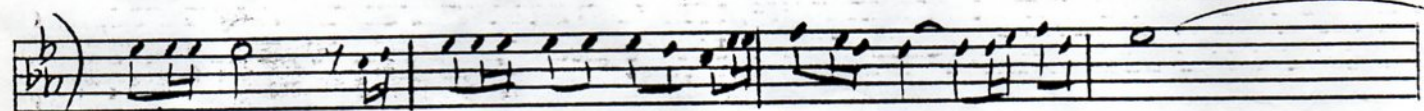
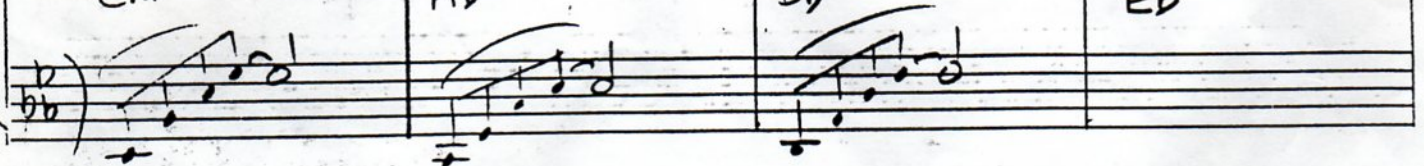


Cm

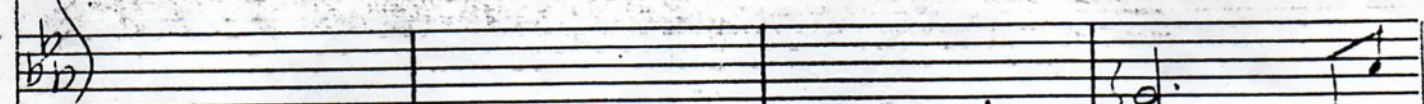
Ab

Bb

Eb



life has been wrong, it's the same old world that it used to be for the sun never shines, never shines on me.



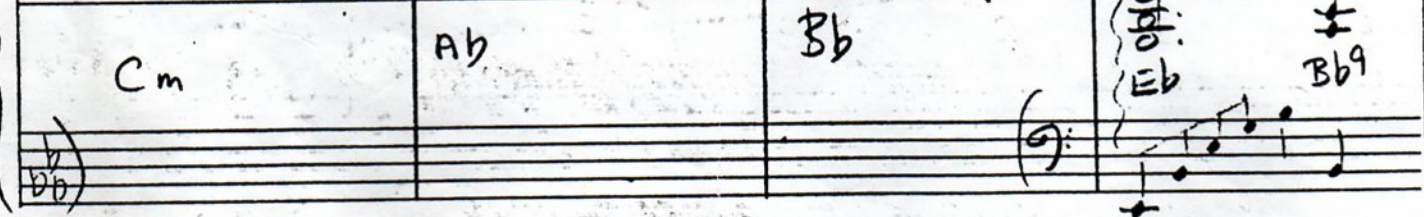
Cm

Ab

Bb

Eb

Bb9



my heart's like a stone, Now I'm truly alone face the unknown, never

(More Rhythmic)

(Sim)

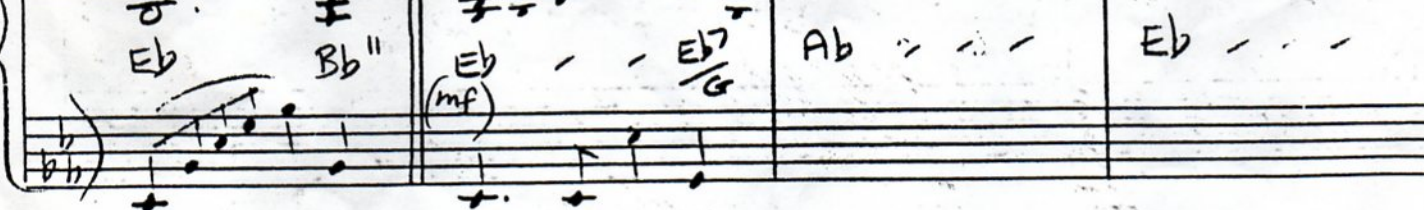


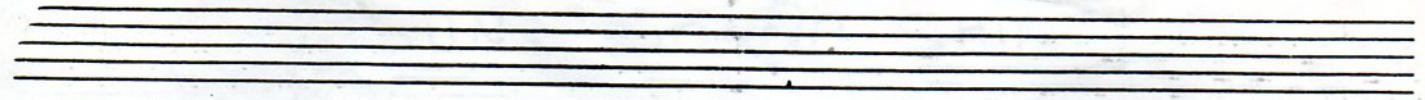
Eb

Bb

Ab

Eb





Free

So much fear, there's no justice up here The sweet smell of air beckons

Bb Eb - - Eb7/G Ab - - Eb

we can it be For the sun never shines cost the rules never bend nota

(Build) (Frit)

Bb B7 E B/D# C#m - C#sus4/B

shimmer of light ever reaches me, so the pain never ends, All my nights have been long All my life has been wrong, it's the

A B - - B7/D# (ff) E - - B/D# C#m - C#sus4/B

same old cord that it used to be,
 For the sun never shines
 never shines on me
 never shines on me
 Shine on

(Rall) -----

A - - - - B - - - - A - B' -

A B''

Slowly

me.
 8va -----

(pp) E Eb Db Bb
 (Rall)

E

Fine