

# Bach 1006 Violoncelle

Partition

JS Bach  
Arr. Liam Morrissey

Violoncelle

4

7

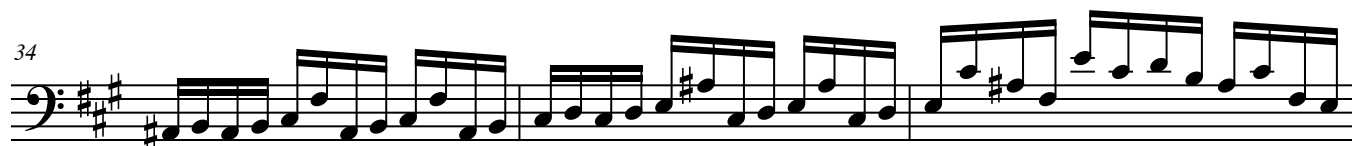
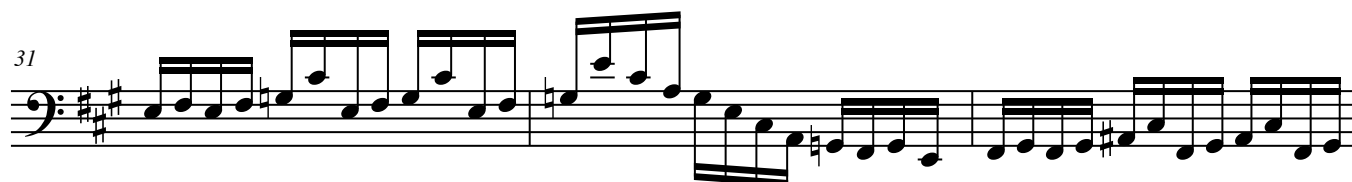
10

13

16

19

22



49

52

55

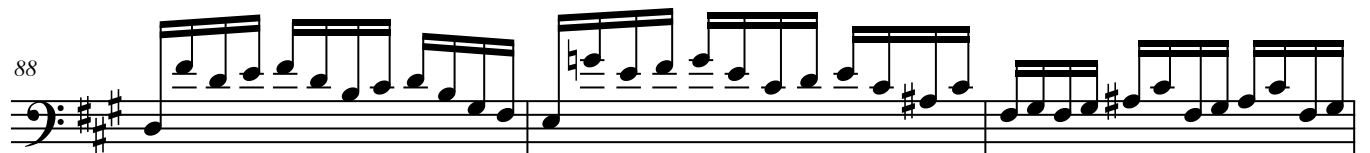
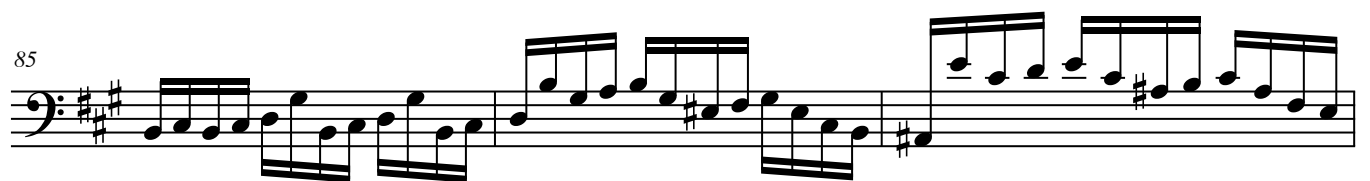
58

61

64

67

70



97

100

103

106

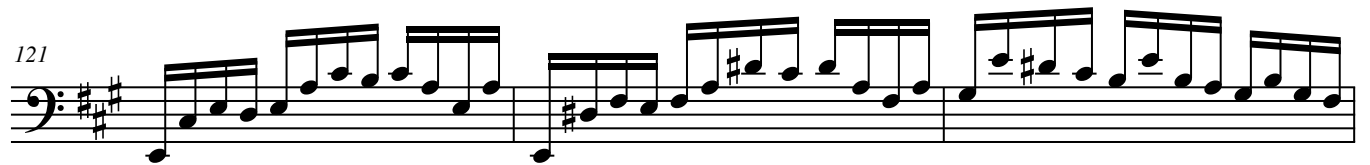
109

112

115

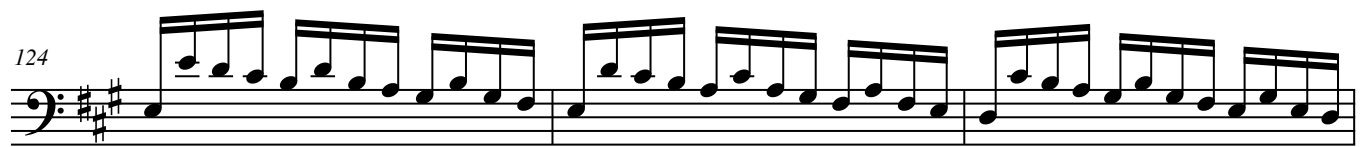
118

121



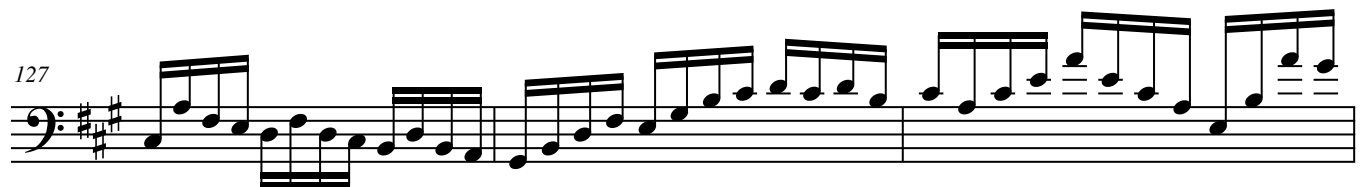
Measures 121-123: The first system of music, starting at measure 121. It features a bass clef and a key signature of two sharps (F# and C#). The music consists of continuous eighth-note patterns across three measures.

124



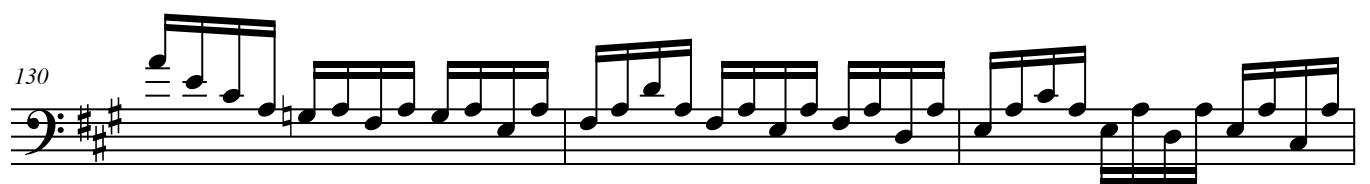
Measures 124-126: The second system of music, starting at measure 124. It continues the eighth-note patterns from the previous system across three measures.

127



Measures 127-129: The third system of music, starting at measure 127. It continues the eighth-note patterns across three measures.

130



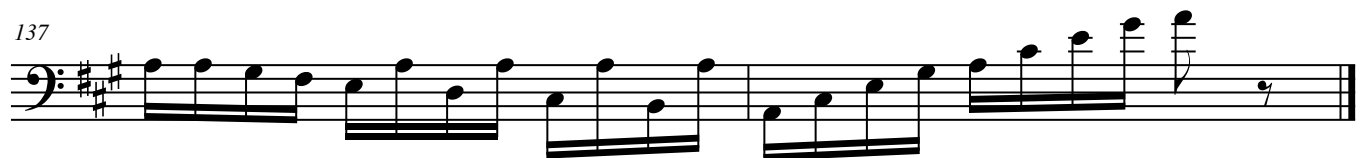
Measures 130-132: The fourth system of music, starting at measure 130. It continues the eighth-note patterns across three measures.

133



Measures 133-136: The fifth system of music, starting at measure 133. It continues the eighth-note patterns across four measures.

137



Measures 137-140: The sixth system of music, starting at measure 137. It continues the eighth-note patterns across four measures, ending with a double bar line.