

求婚大作戰主題曲<<明日晴>>

The image displays a piano score for the theme song 'Wedding Battle Theme Song <<Tomorrow Sunny>>'. The score is written in 4/4 time and features a key signature of one flat (B-flat). It is divided into four systems, each consisting of a right-hand staff and a left-hand staff. The first system includes the instruction 'Ped.' (pedal) above the right-hand staff and below the left-hand staff. The right-hand part features a melodic line with eighth and sixteenth notes, often beamed together, and some notes are marked with accents. The left-hand part provides a harmonic accompaniment with chords and single notes. The second system continues the melodic and harmonic development. The third system includes a key signature change to two flats (B-flat and E-flat) in the right-hand staff, indicated by a 'b' symbol, while the left-hand staff remains in the original key. The fourth system concludes the piece with a final melodic flourish in the right hand and a steady accompaniment in the left hand.

此琴譜由 www.idea-area.com 提供。
如有嚴重侵犯您的版權，請通知我們。

The first system of the piano score consists of two staves. The treble clef staff begins with a series of eighth notes, some marked with a sharp sign, followed by a quarter rest and then a series of eighth notes. The bass clef staff starts with a quarter rest, followed by a series of eighth notes, a quarter rest, and then a series of eighth notes.

The second system of the piano score consists of two staves. The treble clef staff features a series of eighth notes, some marked with a sharp sign, followed by a quarter rest and then a series of eighth notes. The bass clef staff starts with a quarter rest, followed by a series of eighth notes, a quarter rest, and then a series of eighth notes.

The third system of the piano score consists of two staves. The treble clef staff features a series of eighth notes, some marked with a sharp sign, followed by a quarter rest and then a series of eighth notes. The bass clef staff starts with a quarter rest, followed by a series of eighth notes, a quarter rest, and then a series of eighth notes.

The fourth system of the piano score consists of two staves. The treble clef staff features a series of eighth notes, some marked with a sharp sign, followed by a quarter rest and then a series of eighth notes. The bass clef staff starts with a quarter rest, followed by a series of eighth notes, a quarter rest, and then a series of eighth notes.

此琴譜由 www.idea-area.com 提供。
如有嚴重侵犯您的版權，請通知我們。

gfforhappy@163.com

First system of a piano score. The right hand (treble clef) features a melodic line with eighth and sixteenth notes, while the left hand (bass clef) provides a steady accompaniment of eighth notes.

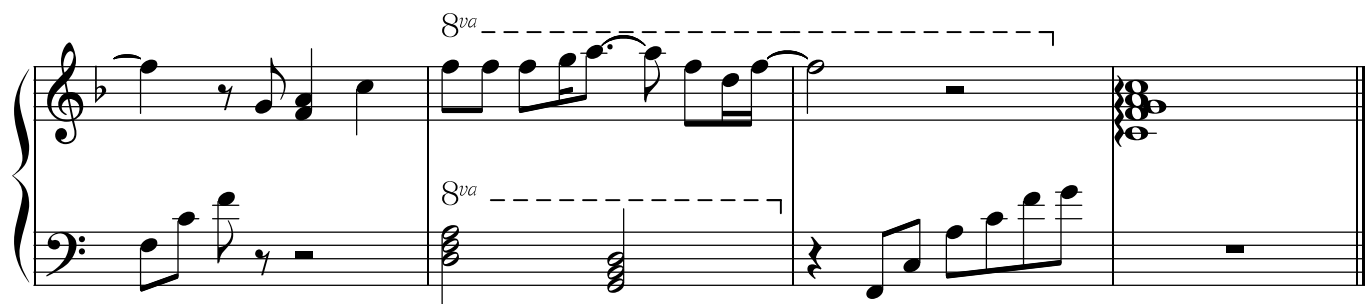
Second system of a piano score. The right hand continues the melodic line, with a section marked *8va* (octave up) indicated by a dashed line. The left hand features a bass line with some chords marked with a sharp sign and a flat sign.

Third system of a piano score. The right hand continues the melodic line, with a section marked *8va* (octave up) indicated by a dashed line. The left hand features a bass line with some chords marked with a sharp sign and a flat sign.

Fourth system of a piano score. The right hand continues the melodic line, with a section marked *8va* (octave up) indicated by a dashed line. The left hand features a bass line with some chords marked with a sharp sign and a flat sign.

此琴譜由 www.idea-area.com 提供。
如有嚴重侵犯您的版權，請通知我們。

gfforhappy@163.com



軫峽涑欽榭

藩絞辦狽囹 玲欽陞咏腔奕緊

符頗睦耄狽 湓涸

警褫眈腔趕

居嗣繫研勤罅居蠅眈 腔壘

湮沘攸

愨燴繚捩 4 Chance...

此琴譜由 www.idea-area.com 提供。
如有嚴重侵犯您的版權，請通知我們。

gfforhappy@163.com