

# THE GIRL FROM IPANEMA (Garota De Ipanema)

© Copyright 1963 by Antonio Carlos Jobim and Vinicius De Moraes, Brazil  
Sole Selling Agent DUCHESS MUSIC CORPORATION (MCA), New York, NY for all  
English Speaking Countries

Original Words by Vinicius De Moraes  
English Words by Norman Gimbel  
Music by Antonio Carlos Jobim

Moderate Bossa Nova  
FM7

G7



When she walks she's like a sam - ba that swings so cool and sways so gen - tle, that when

Gm7

Gb7

1. FM7

Gb7b5

2. FM7

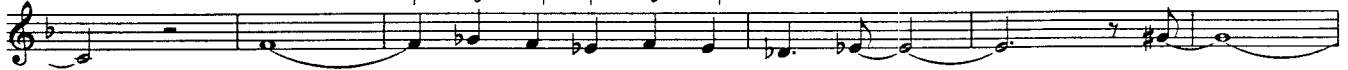


she pass - es, each one she pass - es goes "ah!"

GbM7

Gb9

F#m7



Oh, but I watch her so sad - ly. How



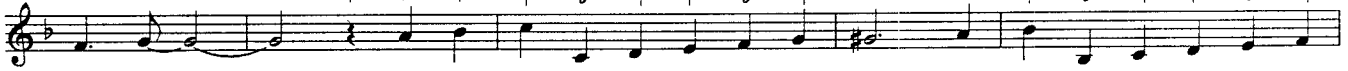
can I tell her I love her? Yes, I would give my heart

Eb9

Am7

D7b9b5

Gm7



glad - ly, but each day when she walks to the sea, she looks straight a - head not at

C7b9b5

FM7

G7



me. Tall and tan and young and love - ly, The Girl From I - pa - ne

Gm7

Gb7b5

FM7



- ma goes walk - ing, and when she pass - es I smile, but she does - n't see.

Gb7

FM7

Gb7

FM7



She just does - n't see. No, she does - n't see.