

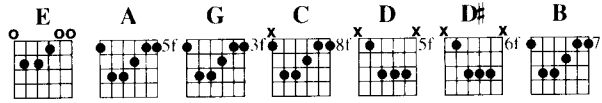
baby animals

• CONTENTS •

- RUSH YOU 5**
- EARLY WARNING 11**
- PAINLESS 16**
- MAKE IT END 21**
- ONE WORD 26**

RUSH YOU

Med Rock ♩ = 118



Words and Music by De Marchi/Parise/Leslie

(Free Rhythm Feel – 1st 3 Bars) (Drum Pickup) Tempo N.C.

Tr

Musical notation for the first three bars. The guitar staff shows a tremolo effect (Tr) over a sustained note. The TAB staff shows fret numbers 6, 7, and 7.

(3rd & 4th time Guitar and Bass Unison) Repeat 3 times N.C.

Musical notation for the 3rd and 4th time guitar and bass unison. The guitar staff shows a melodic line. The TAB staff shows fret numbers 5, 7, 7, 7, 5.

§ A G A C C C

(Lead and Rhythm Guitars use Distortion)

Musical notation for a distorted guitar section. The guitar staff shows a melodic line. The TAB staff shows fret numbers 7, 9, 7, 5, 7, 5, 7, 5, 5, 7.

A G A D

Musical notation for another guitar section. The guitar staff shows a melodic line. The TAB staff shows fret numbers 7, 5, 7, 7, 7, 9, 7, 5.

To Coda ⊕

Musical notation for the first system, including a treble clef staff with a key signature of two sharps and a 3/4 time signature. The melody consists of eighth and quarter notes. Chords A, G, A, and C are indicated above the staff. Below the staff is a guitar TAB with fret numbers 7, 5, 7, 5, 5, 5, 7, 7, 5, 7, 7, 5.

Musical notation for the second system, continuing the melody. Chords A, G, A, and D are indicated above the staff. The guitar TAB below shows fret numbers 5, 7, 9, 7, 5, 7, 5, 7, 5, 5, 5, 7, 7, 5, 7, 7.

Musical notation for the third system, including a double bar line and a Coda symbol. Chords N.C. and Coda are indicated. The guitar TAB below shows fret numbers 3, 7, 9, 7, 5, 7, 5, 7, 5, 5, 5, 6, 7, 7, 7, 8, 7, 9, 7.

Musical notation for the fourth system, including a 3/4 time signature and a key signature of two sharps. It features a vocal line with lyrics and a piano accompaniment. Chords G, A, and A are indicated above the vocal line. The guitar TAB below shows fret numbers 8, 10, 5, 5, 5, 5, 5, 5, 5, 5.

Love Too is no fun
man - y things

Verse 3

A To Double Coda ⊕⊕

An - y more. Tr Tr
I can't af - ford. Tr Tr

TAB

5 5 5 5 5 5 5 5 5 5 5 5 5 5 5 5 5 5

1.A 2.A D#

So

TAB

5 5 5 5 5 5 5 5 5 5 5 5 5 5 5 5 5 5

A

what that do she's you mean. When you say
girl - friend to - day.

TAB

5 5 5 5 5 5 5 5 5 5 5 5 5 5 5 5 5 5

A 1A

Tr Tr Tr Tr

TAB

5 5 5 5 5 5 5 5 5 5 5 5 5 5 5 5 5 5

Double Coda

(Half Time ♩ = 59)

Chorus



2. A E

I would - n't nev - er wan - na Rush you. Don't want to lose

E C D

you. I'd nev - er fuss you. But I love I love I

A C E C

love you Don't wan-na lose you. I'll nev - er fuss you But I love

Ritard D N.C. Fine

D.S. Al Coda *Al Double Coda*

love I love you. I

Tempo N.C. N.C. N.C. N.C.

Do. Say no I

A G A C

TAB 7 9 7 5

C A G A D

TAB 7 5 7 5 5 5 7 7 5 7 7 7

N.C.

Guitar and Bass Unison

TAB 7 7 9 7 5 7 5 7 5 5 5 6 7 7 7 8 7 9 7

G A G A

TAB 3/4 8 10

A A A

Guitar and Bass (Play Bass 8ve Lower)

TAB 4/4 5 5 5 5 5 5

N.C. N.C. N.C. *Play 4 Times*

TAB

5 5 5 5 5 5

N.C. N.C. N.C.

(Spoken) Wealth is Boring Without Happiness the same
Fame is notorious for causing Stress
Health is for binging on in between drinks

TAB

5 5 5 5 5 5

Repeat twice N.C. Ritard C *A Tempo* D. *and fade to fine on repeat chorus*

Money over matter for the rich.
Rich in minks (I would-n't wan-na

TAB

5 5 8 8 10 10 8 7 7 8 8 9 9 7 7

VERSE 3

Luck's not beating down on my door
I guess it's cause ooh, I got lucky
Lucky Before

EARLY WARNING

Med. Rock ♩ = 122

D E A F#m B F# Bm

Words and Music by
De Marchi/Parise/Leslie

Drum Pattern (Pick up plus 1st 8 bars)

Use Distortion Pedal

TAB

10

TAB

11 9 9 9

11 9 11 9

11 9 9 9

N.C. D E

Too young to know too old to list-en

TAB

11 9 11 9

Guitar Instrumental 1

Lead with Bass 8ve lower

N.C. N.C. N.C. (Play B note on Bass)

TAB

7 7 7 7 5 5 5 9 9 9 9 7 5 7

(Play B note on bass)

N.C.

E

You live your life in-side a day - dream.
 Lov-er's pride worn like a cost - ume.

TAB 9 11 9 11 9 :||: 7 9 9 7 7 7 9 9

A

F#m

You're too blind to see what you're

TAB 9 9 9 9 7 7 7 7

Chorus

A

D

E

B

E

A

mis-sing. Well if you love your-self in the morn - ing.

B

E

A

B

Loos-en up your lit-tle bow tie. You know you gave me an ear-

E

A

F#

A

ly warn - ing. Ear - ly warn - ing.

To Coda ⊕

To Double Coda ⊕⊕

Play Repeat after §§§ only

B note struck on bass guitar
N.C.

E

Spoken

Wall to wall mir - rors in your bath room.
See your - self dress - ing with your back turn - ed
You love your wife 'cause she's a chal - lenge

(Ooh Ooh)

Prebend 1/4

TAB

N.C.

Repeat Twice

F#

A

D. al Coda

D E

Spoken

You can love your wife 'cause she's a challenge. (Not bad)
You

TAB

⊕ Coda
⊕⊕ Double Coda
Guitar Instrumental 2 (Double Lead)

Bm

E

D

Guitar 1

TAB

Guitar 2

TAB

E Bm E

Guitar 1

TAB 9 9 9 12 12 9 9 7 7 10 7 9 9 10 7 9 9 9 7 7 9 9 7

Guitar 2

TAB 6 9 6 9 9 9 7 9 6 6 7 9 7 7 6 7 9 9 6 7 9

Guitar Instrumental 3
Use Distortion pedal

D E Bm

Guitar 1

TAB 7 10 7 9 9 10 7 9 9 9 12 12 9 9 15 16 13 14

Pre Bend 1/4

Guitar 2

TAB 9 7 9 6 6 7 9 6 6 9 6 9 9

E Bm E

TAB 13 13 11 14 13 11 13 12 12 16 14 16 14 16 17 14 16 14 17 14 14 16 16

Bm E

TAB

Bm E 8va

TAB

F# A

Too young to know Ha ha Too

Use tremola bar to raise chord tone from E to F# D. ~~S~~al ⊕⊕ and fade on Instr. 3

E F# E D E

young Too old to list - en.

PAINLESS

Med. Rock ♩ = 106

Am D G A Bm C E

Words and Music by
De Marchi/ Parise

Drum Pattern (Pickup plus 6 bars)

N.C. N.C. N.C.

You want to feel a lit-tle warmth... A lit - tle mer - cy. _____ You want to

N.C. N.C. N.C.

feel like this is real... but it's so cold... this time of year. And every-where you liked to go is a re-

Instrumental 1

Am

N.C.

min-der. Re-mind-er.

TAB

3 5 5 | 5 4 0 5 | 7 7 4 7 | 7 5 7 | 5 8 | 5 7 4 5 | 7 7

Oh you can

TAB

5 2 0 7 | 7 4 7 | 7 5 7 | 5 8 | 7 7 4 5 | 7 7

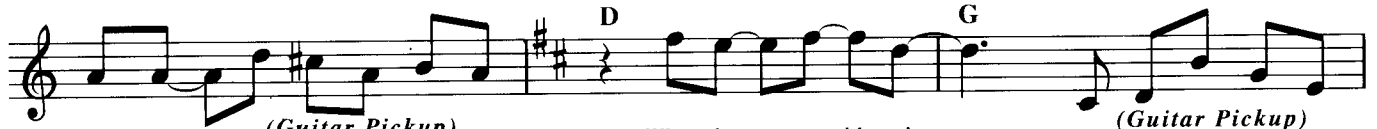
Bridge 1

Am

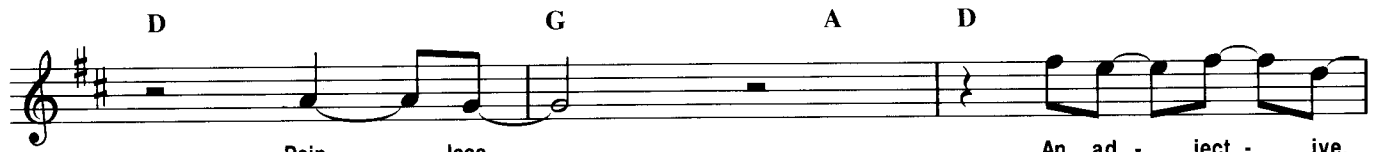


Smell him in the air but this is just be-ing un-fair. I don't care 'cause life was nev-er meant to be

Chorus 1



pain - less. (Guitar Pickup) What I would give. (Guitar Pickup)



Pain - less. An ad - ject - ive.



Pain - less.

Instrumental 1

Am



TAB 5 4 0 5 7 7 4 5 7 7 5 5 8 7 7 4 5 7 7



Not gon - na

TAB 5 2 0 5 7 7 4 5 7 7 5 5 8 7 7 4 5 7 7

Verse 2

Am

beg to be a leg of your ad - ven - ture. Not gon-na cry I'm gon-na laugh. It's like a

lit-tle game of chance. We all an - tic - i - pate the el - e - ments of nat - ure. Well yes - ter

Bridge 2

Am Bm C D

day was years a - go and you have noth - in' more to show I don't care

(Use Distortion Pedal)

TAB 7 9 10 7 7 7

A

'cause I was al - ways meant to be here.

TAB 2 2 7 6 7 4 7

Chorus 2

D G D

What I would give. *Guitar Pickup* Pain - less

G A D G

An ad - ject - ive. *(Guitar Pickup)*

D G A D

Pain - less. Ooh he's my prince of love.

G D G A

Guitar Pickup Pain - less.

Bridge 3
D G A E

Sweet tooth of sin. Ooh. I've got to say it does-n't

D E D

pay be-ing a stran-ger. A lit-tle distance a-mong friends. Sure way to bring an

C C

end. And I need that like a hole in the head.

Instrumental 2

Am

TAB 5 2 0 5 5 3 5 5 2 5 5 5 3 5

Musical notation for the first system, including a treble clef staff with a melodic line and a guitar TAB staff below it. The TAB staff shows fret numbers 5, 2, 0, 5, 5, 3, 5, 5, 2, 5, 5, 5, 3, 5.

Instrumental 3
Double Lead

Am tr *tr* *tr* *tr*

Guitar 1

TAB 14 12 12 11 11 10 10

Musical notation for Guitar 1, featuring a treble clef staff with a melodic line and a guitar TAB staff below it. The TAB staff shows fret numbers 14, 12, 12, 11, 11, 10, 10. Trills are indicated above the notes.

Guitar 2

TAB 5 2 5 5 5 3 5 5 2 5 5 5 3 5 5 2 5 5 5 3 5 5 2 5 5 5 3 5

Musical notation for Guitar 2, featuring a treble clef staff with a melodic line and a guitar TAB staff below it. The TAB staff shows fret numbers 5, 2, 5, 5, 5, 3, 5, 5, 2, 5, 5, 5, 3, 5, 5, 2, 5, 5, 5, 3, 5, 5, 2, 5, 5, 5, 3, 5.

D *ad lib solo over voice* G A *Repeat twice*

Musical notation for a vocal line with guitar accompaniment. The guitar part consists of a D chord followed by a melodic line, then a G chord, and finally an A chord. The vocal line has lyrics "Say yeah yeah".

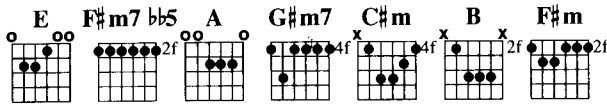
C A D. *and fade on Repeat chorus*

Musical notation for a vocal line with guitar accompaniment. The guitar part consists of a C chord followed by a melodic line, then an A chord, and finally a D chord. The vocal line has lyrics "I need that like a hole in the head."

I need that like a hole in the head. _____

MAKE IT END

Med. Rock ♩ = 125



Words and Music by De Marchi/ Elson

E F#m7bb5 A E F#m7bb5 A

8va | 8va | 8va | 8va | 8va |

TAB

16 17 13 10 9 10 10



Verse 2

E F#m7bb5 A E

The sil - ence is so loud it's deaf - en

F#m7bb5 A E F#m7bb5 A

ing. Oh it seems to hang a - round.

E F#m7bb5 A

Just to threat - en me.

E G#m7

Oh So I still don't know lose my head. How to Fv - 'ry now make it.

C#m B A (Play 2nd time only)

End. and then Make it

TAB

Chorus E A

end. Gon-na lock you out. Out(echo) I'm in hell here with-

E

out you. Check - ing out 'ain't no rem - e - dy no

A F#m7bb5 To Coda ⊕

Ooh. Please.

A B C#m

TAB

E F#m7bb5 A E F#m7bb5 A *D^b al Coda*

8va 8va 8va 8va 8va

TAB 16/16 17/18 12/13 10/9/11

Detailed description: This system contains four measures of music. The first measure has a chord of E (indicated by a whole note on the treble staff) and a TAB of 16/16. The second measure has a chord of F#m7bb5 and a TAB of 17/18. The third measure has a chord of A and a TAB of 12/13. The fourth measure has a chord of F#m7bb5 and a TAB of 10/9/11. Above the fourth measure, there is a section marker *D^b al Coda* with a double bar line and a Coda symbol.

Coda *Coda*

C#m A F#m

TAB 11 11 11 11 9 9 11 11 11 11 9 9 11 11 11 11 9

Detailed description: This system contains three measures of music. The first measure has a chord of C#m and a melodic line starting with a quarter rest, followed by eighth notes. The second measure has a chord of A and continues the melodic line. The third measure has a chord of F#m and continues the melodic line. The TAB below shows fret numbers: 11 11 11 11 9 9 11 11 11 11 9 9 11 11 11 11 9.

A C#m A

TAB 9 11 11 11 11 9 9 11 11 11 11 9 9 11 11 11 11 9

Detailed description: This system contains three measures of music. The first measure has a chord of A and a melodic line starting with a quarter note. The second measure has a chord of C#m and continues the melodic line. The third measure has a chord of A and continues the melodic line. The TAB below shows fret numbers: 9 11 11 11 11 9 9 11 11 11 11 9 9 11 11 11 11 9.

F#m B

TAB 9 11 11 11 11 9 7 7 7 7 7 7 7 7

Detailed description: This system contains two measures of music. The first measure has a chord of F#m and a melodic line starting with a quarter note. The second measure has a chord of B and a melodic line of eighth notes. The TAB below shows fret numbers: 9 11 11 11 11 9 7 7 7 7 7 7 7 7.

(Play with heavy rock feel)

Chord labels: B, E, B, A, A, E

TAB fret numbers: 7, 7, 7, 7, 7, 7, 7, 5, 5, 5, 7, 7

Chord labels: E, B, A, A, E

TAB fret numbers: 7, 7, 7, 7, 7, 7, 7, 5, 5, 5, 7, 7

Chord labels: E, B

TAB fret numbers: 7, 7, 7, 7, 7, 7, 7, 7, 7, 7, 7, 7

Chorus

Chord labels: B, E

Lyrics: Make it end gon - na lock you

TAB fret numbers: 7, 7, 7, 7, 7, 7, 7, 7, 7, 7, 7, 7

A

Out. I'm in hell here with - out you.

E A

Check - ing out ain't no rem - e - dy No. Ooh Please

B *1st time only* E

Make it Oo Ooh

A 1. 2. B

(spoken) Yeah. Make it

E A *1st time only*

Ooh Ooh. I'm in hell here with-

1. 2. B E

out you. Ooh.

A *Fade on repeat*

Ooh

Verse 2 from Sign

This noise is blarin' through my memory
 It's just the thought of you that's drivin' me
 So I said goodbye and you lost your mind
 Turn the tables around now I'm losin' mine.

ONE WORD

Med Rock $\text{♩} = 120$

D A E G Bm B F#m

Words and Music by
De Marchi/ Elson

Intro 1 (16 bars – classical guitar)

A Bass A G A

Guitar 1 Class

TAB 0 2 2 1 2 2 0 0 0 0 0 0 0 3 0 0 0 0 0 0 0 0

F F G E G

TAB 0 2 0 0 0 2 0 2 3 0 0 2 0 0 0 0 2 2 0 0

A A G A

TAB 0 0 2 2 2 2 0 2 0 2 0 3 0 3 3 0 0 0 0 2 0 2 0

F F G E G

TAB 0 2 0 0 0 0 2 0 2 3 0 0 2 0 0 0 2 0 2 2 0 0

A F G A

TAB

A A G A A

TAB

End of Solo

A G A D

Guitar 1

TAB

Guitar 2 electric

TAB

Intro 2

A

1,2,3 E D

Guitar 2

TAB

4. E D A

Oh I wake up feel-ing the same way ev - 'ry

Verse 2

TAB

Detailed description: This system contains the first two measures of a musical piece. The top staff is a vocal line with lyrics 'Oh I wake up feel-ing the same way ev - 'ry'. Above the first measure are chord symbols 'E', 'D', and 'A'. The middle staff shows piano accompaniment. The bottom staff is a guitar tab with fret numbers: 9, 7, 7, 7, 7, 7, 6, 9, 7, 7.

A

day. And I'm ach - ing

TAB

Detailed description: This system contains the next two measures. The top staff has lyrics 'day. And I'm ach - ing'. Above the first measure is the chord symbol 'A'. The middle staff shows piano accompaniment. The bottom staff is a guitar tab with fret numbers: 6, 6, 9, 9, 6.

A D

Numb with the pain that I can't chase a - way. So I'm

TAB

Detailed description: This system contains the next two measures. The top staff has lyrics 'Numb with the pain that I can't chase a - way. So I'm'. Above the first measure is the chord symbol 'A', and above the second measure is 'D'. The middle staff shows piano accompaniment. The bottom staff is a guitar tab with fret numbers: 9, 7, 7, 6, 6, 9, 9.

A G

won - der - ing who's tak - ing up your sec - ret prec - ious

Detailed description: This system contains the final two measures. The top staff has lyrics 'won - der - ing who's tak - ing up your sec - ret prec - ious'. Above the first measure is the chord symbol 'A', and above the second measure is 'G'. The middle staff shows piano accompaniment. The bottom staff is a guitar tab with fret numbers: 7, 7, 7, 7, 7, 7, 7, 7, 7, 7.

Bm A G E

time liv-ing from day to day with - out a sin - gle sign. Would I

Chorus 1

A D

lie Oh no. One word and one let - ter one line.

G D G D A

And I'd feel a whole lot bet - ter. One look would say

D G D G D

it's al-right. And I'd feel a whole lot bet - ter.

E

Yes I'd feel a whole lot bet - ter now

Solo (10 bars electric guitar - with slide guitar accomp. (open A tuning))

A E D

tr tr

TAB 18 16 17 19 17 19 17 18 16 19

A *tr* E D

TAB 18 17 17

A *tr* E D

TAB 18 17 17 14 14 14 11 9 8 7 7 9 7

A E D

TAB 6 6 6 6 7 8 9 9 8 8 7 7 7

Then I

Bridge

D A

try try to keep just a lit - tle

B E

some - thing that means noth - in' to me ooh why pre

D A F#m

tend that I'm in that deep Lord. I thought you knew it Ooh

E E

Yeah Yeah

Chorus 2

A D G

One word and one let - ter one line. And I feel a whole

D G D A D

lot bet - ter. One look would say it's al - right.

1. G D G D

And I'd feel a whole lot bet - ter.

2. G D G D G

TAB

The image shows a musical score for guitar. It consists of two staves. The top staff is a treble clef staff with a melody line. The bottom staff is a guitar tablature staff labeled "TAB". Above the melody line, there are chord diagrams for D, G, D, G, D, G, D, G, and A. The melody line starts with a G4 note, followed by an A4, B4, G4, F#4, E4, and D4. The guitar tablature shows the following fret numbers: 5, 7, 7, 5, 5, 7, 7, 5, 5. The chord diagrams are: D (x02321), G (x32033), D (x02321), G (x32033), D (x02321), G (x32033), D (x02321), G (x32033), and A (x02232).

VERSE 2 ON SIGN

My heart breaks the way you turn your back and carry on
 And my head hurts 'cause I just can't work out why it all went wrong
 So I'm wondering, Oh the more I think
 The less I understand
 Leaving is easy when you know you're in command
 Would I lie? Oh no.

Photocopying of this music is illegal.