

TRIO

FLAUTO PRIMO.

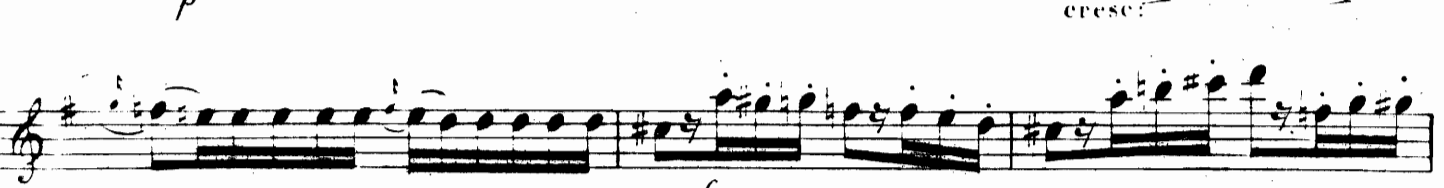
F. KULHAU, Op. 419 bis.

2

Allegro moderato...

Piano.

TRIO.



FLAUTO PRIMO.

The musical score for Flauto Primo, page 3, is written in G major and 3/4 time. It consists of ten staves of music. The first staff begins with a forte (*f*) dynamic and a triplet of eighth notes. The second staff continues with a melodic line. The third staff features a triplet of eighth notes and a *dim.* (diminuendo) marking. The fourth staff includes a *tr* (trill) and a *rit.* (ritardando) marking. The fifth staff starts with a piano (*p*) dynamic and a triplet of eighth notes. The sixth staff has a forte (*f*) dynamic. The seventh staff continues with a melodic line. The eighth staff begins with a piano (*p*) *dolce.* (dolce) dynamic. The ninth staff has a mezzo-piano (*sp*) dynamic. The tenth staff starts with a *cresc.* (crescendo) marking and ends with a forte (*f*) dynamic and a triplet of eighth notes.

FLAUTO PRIMO.

p

dolce

con grazia.

dim.

p *cresc.* *f*

p dolcissimo.

tr

6 3

FLAUTO PRIMO

dim: rinf: p

p dolce. *f*

Adagio
Patetico.

p espressivo

con affetto.

leggiero.

cresc f dim: p ritard: a tempo.

FLAUTO PRIMO.

espressivo.

p

mf

f *p*

p *p* *p* *smorzando.*

tr

This system contains the first four staves of music. The first staff begins with a piano (*p*) dynamic and is marked *espressivo.* The second staff features a fingering '2' and a mezzo-forte (*mf*) dynamic. The third staff shows a crescendo from *f* to *p*. The fourth staff includes a trill (*tr*) and a *smorzando.* (diminuendo) marking.

RONDO.

Allegro.
piano.

This system contains the fifth and sixth staves. The fifth staff is marked *RONDO.* and *Allegro. piano.* The sixth staff continues the rhythmic pattern.

p legg.

This system contains the seventh and eighth staves. The eighth staff ends with a piano *legg.* (leggiero) dynamic marking.

This system contains the ninth staff, featuring a melodic line with slurs.

f

This system contains the tenth staff, marked with a forte (*f*) dynamic.

f *p*

This system contains the eleventh staff, marked with a forte (*f*) dynamic that transitions to piano (*p*).

dim.

This system contains the twelfth staff, marked with a *dim.* (diminuendo) dynamic.

FLAUTO PRIMO.

p

mf

f

p

f

f

sf

poco scherzando.

f

11

12

13

14

15

FLAUTO PRIMO.

p

f

p

f

p

mf

ff

p con espress:

45

dolce.

p

FLAUTO PRIMO.

p
f
dim:
f
dim:
f
f
p dolce scherzando.
f
dim:
p
f
f
p dolce.
f
f
p leggiero.
eres
f
sempre.
fine.