

Concerto di mandolino con Violini e Basso obbligati

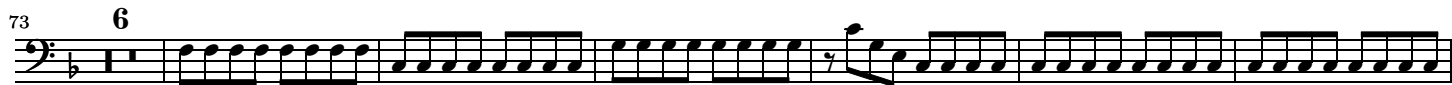
GASPARE GABELLONE (1727-1796)

Gimo 88

Basso

ALLEGRO





LARGO



ALLEGRO



31

46

89

104

119

144

170

10

11

28

The image shows a musical score for a bass clef instrument, likely a double bass or electric bass. The score is written in a single system with seven staves. The key signature is one flat (B-flat). The time signature is not explicitly shown but appears to be 4/4 based on the note values. The score is divided into measures, with measure numbers 31, 46, 89, 104, 119, 144, and 170 marked at the beginning of their respective staves. There are also measure numbers 10 and 11 placed above the staves at measures 119 and 144 respectively. The music consists of a series of eighth and sixteenth notes, often beamed together, with some rests and dynamic markings. The final measure (170) ends with a fermata.