

# HELLO! HELLO! WHO'S YOUR LADY FRIEND?

Written by  
WORTON DAVID & BERT LEE

Composed by  
HARRY FRAGSON

Moderato

Key F

VOICE

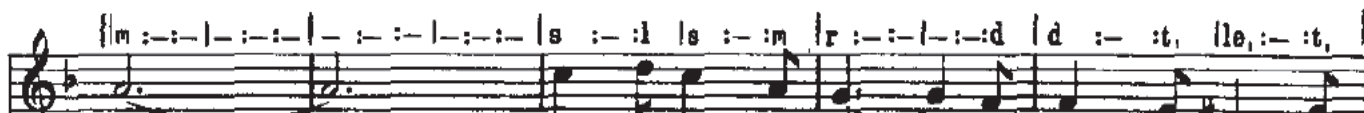


1. Je - re - mi - ah
2. Je - re - mi - ah
3. Je - re - mi - ah
4. Christ - mas pan - to -

PIANO



Jones— a la - dy's man was he— Ev - 'ry pret - ty girl he loved to  
took— his wife's mamma one night:— Round to see a mov - ing pic - ture  
now— has set - tled down in life,— Said Good - bye to frills and fur - be -  
-mime— were Jones - 's chief de - light,— Once he mad - ly loved the Fair - y



spoon;— Till he found a wife— and down be - side the  
show:— There up - on the screen— a pic - ture came in  
-lows:— Nev - er thinks of girls— ex - cept his dar - ling  
Queen;— There be - hind the scenes,— he spoon'd with her one



C.t.

sea Went to Mar-gate for the ho - ney-moon; But when he  
 sight, Je - re - mi - ah cried "He'd bet - ter go!" For on that  
 wife, Al - ways takes her ev - 'ry-where he goes, By jove, why!  
 night, Some - one for a lark pulled up the scenes, And there was

f.F.

Strolled a - long the prom-e - nade — With his lit - tle wife, — just new ly  
 Pic - ture there was Je - re - miah — With a pret - ty girl — up - on his  
 There he is — you naughty boy! — With a la - dy too — you're ra - ther  
 Poor old Jones up - on the stage — With his arm a - round — the la - dy

C.t.

wed, — He got an aw - ful scare — when some - one stroll - ing  
 knee; — Ma cried, "What does it mean?" then point - ing to the  
 free; — Of course, you'll stake your life — the la - dy is your  
 fair, — The house be - gan to roar — from gall - 'ry down to

f.F.

there — Came up to him and winked and said, —  
 screen, — The peo - ple yelled at Jones with glee, —  
 wife, — But tell me on the strict Q. T. —  
 floor — Then ev - 'ry - bo - dy shout - ed there, —

CHORUS

Hel - lo! hel - lo! who's your la - dy friend?

The first system of the chorus features a vocal line and piano accompaniment. The vocal line begins with a treble clef and a key signature of one flat. The lyrics are "Hel - lo! hel - lo! who's your la - dy friend?". The piano accompaniment starts with a *p-f* dynamic marking. The music is in 8/8 time and consists of four measures.

Who's the lit - tle girl ie by your side?

The second system of the chorus continues the vocal line and piano accompaniment. The lyrics are "Who's the lit - tle girl ie by your side?". The piano accompaniment continues with a steady eighth-note bass line and chords in the right hand.

I've seen you - with a girl or two - Oh! oh!

The third system of the chorus features the vocal line and piano accompaniment. The lyrics are "I've seen you - with a girl or two - Oh! oh!". The piano accompaniment continues with a steady eighth-note bass line and chords in the right hand.

oh! I am surprised at you; Hel - lo! hel

The fourth system of the chorus features the vocal line and piano accompaniment. The lyrics are "oh! I am surprised at you; Hel - lo! hel". The piano accompaniment continues with a steady eighth-note bass line and chords in the right hand.

||s :- :- | :- :- | f :- :m tr :- :m | f :- :- | :- :- | f :- :m tr :- :de }

-lo! stop your lit - tle games— Don't you think your

||r :- :de | r :- :re | m :- :- | :- :- | :- :- | :- :- :m | m :m :m | re :- :m }

ways you ought to mend? \_\_\_\_\_ It is-n't the girl I

||f :- :m | re :- :m | |v :- :- | :- :- | r :- :- | :- :- | |s v :- :- | |s v :- :- |

saw you with at Brigh - ton, Who— who—

||s v :- :f | r :- :m | |1 | d :- :- | :- :- | :- :- | :- :- | |2 | d :- :- | :- :- | :- :- | :- :- |

who's your la - dy friend? \_\_\_\_\_ Hel- friend? \_\_\_\_\_

D.C. %